

SUTTER

COUNTY OF



PRESIDENTIAL PRIMARY ELECTION

TUESDAY, MARCH 5, 2024

Voter Information Pamphlet



Compiled and Distributed by Sutter County Elections

1435 Veterans Memorial Circle
Yuba City, CA 95993
Office: 530-822-7122 Fax: 530-822-7587
www.suttercounty.org/elections
<http://twitter.com/suttervote>

SIMPLE – SAFE – SECURE

You will also be able to track your mail ballot every step of the way!

You will know when it is mailed, received, and counted by the Registrar of Voters. All you need to do is sign up for Where's My Ballot? at wheresmyballot.sos.ca.gov

Tuesday, March 5 - Polls Open at 7 a.m. & Close at 8 p.m.



C04



Voting Instructions – paper ballot



Mark your ballot

Use a pen with blue or black ink to fill in the oval to the left of the candidate's name you wish to vote for. Do not use red ink, pencil, or Sharpie.



To mark your choice, fill in the oval completely.

Voting for more than allowed for a contest will be an over vote and no votes for that contest will be counted. The rest of the ballot will count.

Do not sign your name, write your initials, or write any other words/marks on your voted ballot.



To vote for a **qualified** write-in candidate, write their name in the blank space at the end of the list of candidates. A list of qualified write-in candidates is available by phone, at polling places, or online at www.suttercounty.org/elections.

Check your ballot carefully

Made a mistake? To get a replacement, you can:



Email your request to elections@co.sutter.ca.us, or:



Request a replacement ballot by phone - call 530-822-7122, or:



Visit the Elections office at 1435 Veterans Memorial Circle, Yuba City.

Cast your ballot

Place your voted ballot inside the blue return envelope. Sign your name, write your residence address in the spaces provided, and seal.

Return it by:



Mailing your ballot so that it is postmarked by Election Day, or:



Dropping your ballot at any secure Ballot Drop Box, or:



Visiting any Polling Place on Election Day before 8:00 pm.

Vote in person

To vote a ballot at the polls, visit your polling place [noted on your Vote by Mail envelope](#) located under your name and request a ballot from the pollworker.



A facsimile ballot in the following languages will be available at all polling places: Spanish, Punjabi and Tagalog.

You may bring up to two individuals with you to your polling place to help you cast your ballot, as long as those individuals do not represent your employer or your union.

Voting by mail?

You can request a copy of your ballot in these languages be mailed to you.

- Call us at 530-822-7122
- Email us at elections@co.sutter.ca.us

ESPAÑOL

Una boleta facsímil en los siguientes idiomas estará disponible en todos los lugares de votación: español, punjabi y tagalo.

Usted puede traer dos individuos a la estación de votación para que le ayuden a emitir su voto. Sus acompañantes no pueden ser representantes de su empleador o sindicato.

¿Votando por correo?

Puede solicitar que le enviemos una copia de su boleta en español.

- Llámenos al 530-822-7122
- Envíenos un correo electrónico a elections@co.sutter.ca.us

TAGALOG

Bisitahin ang aming website upang makita ang isang listahan ng mga lugar ng botohan kung saan ang mga sumusunod na materyal ay makukuha.

Maaari kang magsama ng hanggang (2) tao sa iyong lugar ng botohan upang tulungan na ipatala ang iyong balota sa kondisyon na ang mga taong ito ay hindi kumakatawan sa iyong pinagatrabahuhan o unyon.

Pagboto sa pamamagitan ng koreo

Makahihiling ka na ipakoreo sa iyo ang isang kopya ng iyong balota sa Kastila, Punjabi at Tagalog sa pamamagitan ng mga sumusunod na paraan: Tumawag sa 530-822-7122

Email elections@co.sutter.ca.us

ਮਤਦਾਨ ਦੀਆਂ ਸਾਰੀਆਂ ਥਾਂਵਾਂ 'ਤੇ ਇਹਨਾਂ ਭਾਸ਼ਾਵਾਂ ਵਿੱਚ ਇੱਕ ਪ੍ਰਤੀਕਿਰਤੀ ਬੈਲਟ ਉਪਲਬਧ ਹੋਵੇਗਾ: ਸਪੈਨਿਸ਼, ਪੰਜਾਬੀ ਅਤੇ ਟੈਗਾਲੋਗ।

ਤੁਸੀਂ ਆਪਣੀ ਵੋਟ ਪਾਉਣ ਵਿੱਚ ਮਦਦ ਕਰਨ ਲਈ ਆਪਣੇ ਮਤਦਾਨ ਦੀ ਥਾਂ 'ਤੇ ਦੋ ਤੱਕ ਵਿਅਕਤੀਆਂ ਨੂੰ ਆਪਣੇ ਨਾਲ ਲਿਆ ਸਕਦੇ ਹੋ, ਜਦੋਂ ਤੱਕ ਕਿ ਉਹ ਵਿਅਕਤੀ ਤੁਹਾਡੇ ਰੁਜ਼ਗਾਰਦਾਤਾ ਜਾਂ ਤੁਹਾਡੀ ਯੂਨੀਅਨ ਦੀ ਨੁਮਾਇੰਦਗੀ ਨਾ ਕਰਦੇ ਹੋ।

ਡਾਕ ਦੁਆਰਾ ਵੋਟਿੰਗ ਕਰਨਾ ਚਾਹੁੰਦੇ ਹੋ?

ਤੁਸੀਂ ਇਹਨਾਂ ਭਾਸ਼ਾਵਾਂ ਵਿੱਚ ਆਪਣੇ ਬੈਲਟ ਦੀ ਇੱਕ ਕਾਪੀ ਤੁਹਾਨੂੰ ਡਾਕ ਰਾਹੀਂ ਭੇਜਣ ਲਈ ਬੇਨਤੀ ਕਰ ਸਕਦੇ ਹੋ।

- ਸਾਨੂੰ 530-822-7122 'ਤੇ ਕਾਲ ਕਰੋ
- ਸਾਨੂੰ Election@co.sutter.ca.us 'ਤੇ ਈਮੇਲ ਭੇਜੋ





How to vote in a Presidential Primary Election

Voting for President depends on the party you are registered with. If you are not registered with a qualified political party, and you do not request a party ballot, your ballot will NOT contain the office of President.

The primary election in March chooses the candidates who will run in the General Election in November. You may see three different types of primaries on your ballot. The way each primary works depends on the office.

 <p>Presidential Nominated by party</p>	 <p>California Top-Two Primary Nominated by voters</p>	 <p>Local Nonpartisan candidates</p>
---	--	--

Who can vote in each type of primary election in 2024?

<p>Only voters who registered in the same political party as the candidate can vote for these offices.</p> <p>The following parties allow voters who registered with no party preference to vote in their presidential primary.</p> <ul style="list-style-type: none"> American Independent Democratic Libertarian 	<p>All voters can vote for any candidate running for these offices. All candidates from all parties appear on the ballot for these offices.</p>	<p>All voters can vote for any candidate running for these offices.</p>
---	--	--

Which offices are in each type of primary?

<p>The candidates' party always appears on the ballot</p>	<p>The candidates' party preference (or "None") always appears on the ballot.</p>	<p>The candidates' party preference never appears on the ballot</p>
<p>U.S. President Parties may also elect candidates for County Central Committees.</p>	<p>U.S. Senator U.S. Representative State Senator State Assembly Member</p>	<p>Superior Court Judges County Supervisors</p>

What is the result of each type of primary election?

<p>The winner of each political party's Presidential primary will represent that party in the General Election.</p>	<p>The top two candidates with the most votes move on to the General Election.</p> <p>They may have the same party preference.</p>	<p>Candidates who receive at least 50% plus 1 vote are elected.</p> <p>Or, if no candidate wins, the two candidates with the most votes move on to the General Election.</p>
--	---	--





Party Endorsements

Proposition 14, approved by the voters in 2010, authorizes political parties to endorse candidates to Voter-Nominated offices. This pamphlet contains the official endorsements that were received by the deadline.

The following parties endorse the following candidate(s):

AMERICAN INDEPENDENT PARTY

<u>Office</u>	<u>Party Preference</u>	<u>Candidate Name</u>
Congressional District 1	Republican	Doug LaMalfa
US Senate	Republican	James Bradley
State Senate District 1	Republican	David Fennell
State Assembly District 3	Republican	Jamie "James" Gallagher

DEMOCRATIC PARTY

<u>Office</u>	<u>Party Preference</u>	<u>Candidate Name</u>
Congressional District 1	Democratic	Rose Penelope Yee

REPUBLICAN PARTY

<u>Office</u>	<u>Party Preference</u>	<u>Candidate Name</u>
Congressional District 1	Republican	Doug LaMalfa
Assembly District 3	Republican	Jamie "James" Gallagher

U.S. Senate Information

There are two U.S. Senate contests on the March 5, 2024, Presidential Primary Election ballot.

The first contest is the regular election for the full 6-year term ending January 3, 2031.

The second contest is a special vacancy election (the current officeholder is temporarily filling a vacancy) for the remainder of the current term ending January 3, 2025.

You may vote for both contests.

Statement Information

The following pages contain voter information applicable to your ballot which may include any or all of the following:

- Candidate's Statements
- Ballot Measure, Analyses, Arguments and Rebuttals

A complete list of candidates appears on the Sample Ballot. Each Candidate's statement is volunteered by the candidate and is printed at their expense unless otherwise determined. The text, grammar and spelling are as submitted. All candidates may not have submitted statements.



**STATEMENT OF CANDIDATE FOR
UNITED STATES REPRESENTATIVE, DISTRICT 1**

DOUG LAMALFA

Occupation: Farmer, Member of the United States House of Representatives

Education and Qualifications:The last several years have been difficult for too many. Inflation has taken a bite out of family budgets, gas and energy prices have soared, crime and lawlessness have crept into our rural communities. The challenges we face in Northern California just keep growing.

Bloated federal budgets fuel inflation and add to the national debt. As your representative in Congress, I voted for the Bi-Partisan Fiscal Responsibility Act to limit spending and save taxpayers \$2.1 trillion by cutting waste.

I continue to work to improve disaster recovery, including passing tax relief for the victims of wildfires. Increasing water supplies and protecting our water from being wasted by government mismanagement is critical. I have been able to deliver \$3.8 billion in low interest loans and grants for Sites Reservoir planning and construction.

Mass illegal immigration, cartel marijuana grows, the menace of fentanyl, tragic human trafficking are symptoms of the current Administration's refusal to control the border. I've voted to strengthen and defend the border. We must finally complete the wall, it's essential to our national security.

I have consistently worked to bring energy prices down and make America energy independent by increasing domestic oil and natural gas production as well as renewables such as biomass power and clean, cheap hydroelectric.

I will always fight to protect our Constitution and our individual rights. It's my privilege to serve you in Congress, to be your voice. I'd be honored to receive your vote. Thank you. www.DougLaMalfa.com or call 530-712-3675.

s/ Doug Lamalfa

EACH CANDIDATE'S STATEMENT OF QUALIFICATIONS IS PRINTED EXACTLY AS SUBMITTED BY THE CANDIDATE.



**STATEMENT OF CANDIDATE FOR
UNITED STATES REPRESENTATIVE, DISTRICT 1**

ROSE PENELOPE YEE

Occupation: Business Leader, Finance Professional, Investor

Education and Qualifications: Like you, I'm a proud American.

I have a vision for America: a nation where we live the very best possible lives we can live, where everyone has the opportunity to achieve the American dream. But for many, the American dream seems so far out of reach. The struggle to make ends meet and keep ones head above water is real.

As such, I will focus on uplifting Americans' financial wellbeing. Parents should earn wages for a full day's work enough to feed, clothe, and house their families without needing a second or third job to do it.

I will work towards an America that works for all Americans: Healthcare for Americans: Quality healthcare through Medicare for All. Education for Americans: Adequately fund our schools and give youth access to trade schools, public colleges, and universities without crippling student loans. Security for Americans: Protect our seniors by preserving and expanding Social Security, uphold workers' rights, and create a Federal Jobs Guaranty to provide Economic Security for all.

Safety for Americans: Ensure a healthy and safe environment that promotes our well-being.
Care for Americans: An economy where budgets and laws passed put the welfare of Americans first, rather than the profiteering of billionaires.

I'm inviting you to join me on this journey. With your vote, we can realize our shared vision of a kinder, gentler America with thriving communities and caring neighborhoods.

It will be an honor to get your vote and serve you in Congress.

Thank you.

www.roseforcongress.com

s/ Rose Penelope Yee

**DECLARACIÓN DE CANDIDATA A
REPRESENTANTE DE ESTADOS UNIDOS, DISTRITO 1**

ROSE PENELOPE YEE

Occupación: Líder Empresarial, Profesional Financiera, Inversorista

Educación y calificaciones: Como usted, soy una orgullosa estadounidense.

Tengo una visión para Estados Unidos: una nación en la que vivamos lo mejor posible, en la que todo el mundo tenga la oportunidad de alcanzar el sueño Americano.

Pero, para muchos, el sueño Americano parece estar muy lejos de su alcance. La lucha por llegar al fin de mes y mantener la cabeza fuera del agua es real.

Como tal, me centraré en mejorar el bienestar financiero de los estadounidenses. Los padres de familia deben ganar sueldos por un día completo de trabajo suficientes para alimentar, vestir y proporcionar vivienda a sus familias sin la necesidad de un segundo o tercer empleo para hacerlo.

Trabajaré por unos Estados Unidos que funcionen para todos los estadounidenses: Atención médica para los estadounidenses: Atención médica de calidad a través de Medicare para Todos.
Educación para los estadounidenses: Financiar adecuadamente nuestras escuelas y dar a los jóvenes acceso a escuelas de oficios, universidades públicas, y universidades sin abrumadores préstamos estudiantiles.

Seguridad para los estadounidenses: Proteger a nuestros adultos mayores preservando y ampliando el Seguro Social, defender los derechos de los trabajadores, y crear una Garantía Federal de Empleo para proporcionar Seguridad Económica a todos.
Seguridad para los estadounidenses: Garantizar un entorno saludable y seguro que promueva nuestro bienestar.

Atención para los estadounidenses: Una economía en la que los presupuestos y las leyes aprobados pongan el bienestar de los estadounidenses en primer lugar, en lugar de la especulación de los multimillonarios.

Lo invito a unirse a mí en este viaje. Con su voto, podemos hacer realidad nuestra visión compartida de unos Estados Unidos más amables y apacibles, con comunidades prósperas y vecindarios solidarios.

Será un honor obtener su voto y servirle en el Congreso.

Gracias.

www.roseforcongress.com

f/ Rose Penelope Yee



**STATEMENT OF CANDIDATE FOR
STATE SENATE, DISTRICT 1**

MEGAN DAHLE

Occupation: Farmer/Businesswoman/Mother

Education and Qualifications: As an Assemblywoman, I have championed the issues of the North State in Sacramento and have successfully secured tens of millions of dollars for our communities.

There is more work to be done.

California's high cost of living is forcing families to decide between buying groceries or putting gas in their cars. By voting to suspend the state's 54 cent/gallon gas tax, I fought to save consumers over \$1,600 a year and make it less expensive for farms and manufacturers to get products to market.

Families can't afford higher taxes and increased healthcare costs. That's why I have repeatedly opposed efforts to raise our gas, sales, property and other taxes – while working to reduce healthcare costs.

Crime is out of control and we need criminals off our streets.

I have pushed legislation to crack down on smash-and-grab robberies, co-authored a law to more severely punish human traffickers and backed measures to more effectively prosecute fentanyl dealers.

To reduce homelessness, I've supported legislation that addresses mental health and addiction issues that are often a root cause.

By working to improve forestry management, properly maintain power lines and make fire insurance more affordable, I am fighting to protect homes from wildfires.

The California Professional Firefighters support my re-election. Please join them and my campaign to get California back on track.

Please visit www.votemegandahle.com to learn more about my values.

I'd be honored to have your vote.

s/ Megan Dahle

**STATEMENT OF CANDIDATE FOR
STATE SENATE, DISTRICT 1**

DAVID FENNEL

Occupation: Entrepreneur

Education and Qualifications: My name is David Fennell and I am running to be your State Senator. We have been through a lot together in Northern California with rising costs, increased crime, decreased water, fire outbreaks & economic uncertainty. Our great region is constantly being outvoted by more populated Los Angeles who doesn't understand our problems or share our values.

Why are violent criminals allowed to rob at will?

Why are we releasing water farmers need into the ocean?

Why are forests mismanaged, resulting in historic burns?

Why are bureaucrats being allowed to destroy business & innovation?

Why are the values of our Northern California families under assault?

The answer is we have a lack of leadership in Sacramento.

Newly redrawn Senate District 1 calls for new leadership! I have a college degree & 30+ years of real-world business experience & will bring practical solutions to Sacramento. Our region is the most beautiful! While others leave California, I visited all our counties. 60+ campaign stops. Time to elect a fighter! Will you join me in the fight to save our State?

I will not let you down!

Vote David Fennell for State Senate!

www.fennellforsenate.com

s/ David Fennell



SUTTER UNION HIGH SCHOOL DISTRICT

FULL TEXT OF BOND MEASURE B

BOND AUTHORIZATION

By approval of this measure by at least 55% of the registered voters voting on the measure, the District will be authorized to issue and sell bonds of up to \$13,800,000 in aggregate principal amount at interest rates not to exceed legal limits and to provide financing for the specific types of school facilities projects listed in the Bond Project List included below, subject to all the accountability requirements specified below.

ACCOUNTABILITY REQUIREMENTS

The provisions in this section are specifically included in this measure in order that the voters and taxpayers in the District may be assured that their money will be spent wisely. Expenditures to address specific facilities needs of the District will be in compliance with the requirements of Article XIII A, Section 1(b)(3), of the State Constitution and the Strict Accountability in Local School Construction Bonds Act of 2000 (codified at Education Code Sections 15264 and following.)

The Bonds may be issued under the provisions of the California Education Code (starting at Section 15100), under the provisions of the California Government Code (starting at Section 53506), or under any other provision of law authorizing the issuance of general obligation bonds by community college districts. The Bonds may be issued in series by the District, from time to time, and each series of Bonds shall mature within the legal limitations set forth in the applicable law under which the Bonds are issued.

Evaluation of Needs. The Governing Board of the District has identified detailed facilities needs of the District, and has determined which projects to finance from a local bond. The Governing Board hereby certifies that it has evaluated safety, class size reduction, enrollment growth, and information technology needs in developing the Bond Project List described below.

Independent Citizens' Oversight Committee. Following approval of this measure, the Governing Board will establish an independent citizens' oversight committee, under Education Code Sections 15278 and following, to ensure bond proceeds are expended only on the types of school facilities projects listed below. The committee will be established within 60 days of the date when the results of the election appear in the minutes of the Governing Board.

Performance Audits. The Governing Board will conduct annual, independent performance audits to ensure that the bond proceeds have been expended only on the school facilities projects listed below.



Financial Audits. The Governing Board will conduct annual, independent financial audits of the bond proceeds until all of those proceeds have been spent for the school facilities projects listed below.

Government Code Accountability Requirements. As required by Section 53410 of the Government Code, (1) the specific purpose of the bonds is set forth in this Full Text of the Measure, (2) the proceeds from the sale of the bonds will be used only for the purposes specified in this measure, and not for any other purpose, (3) the proceeds of the bonds, when and if issued, will be deposited into a building fund to be held by the Sutter County Treasurer, as required by the Education Code, and (4) the Superintendent of the District shall cause an annual report to be filed with the Governing Board of the District not later than January 1 of each year, which report shall contain pertinent information regarding the amount of funds collected and expended, as well as the status of the projects listed in this measure, as required by Sections 53410 and 53411 of the Government Code.

NO TEACHER OR ADMINISTRATOR SALARIES

Proceeds from the sale of bonds authorized by this measure shall be used only for the purposes specified in Article XIII A, Section 1(b)(3), specifically the construction, reconstruction, rehabilitation, or replacement of school facilities, including the furnishing and equipping of school facilities, and the acquisition or lease of school facilities, and not for any other purpose, including teacher and administrator salaries and other school operating expenses.

STATE MATCHING FUNDS

The following statement is included in this measure pursuant to Education Code Section 15122.5: Approval of this measure does not guarantee that the proposed projects that are the subject of bonds under this measure will be funded beyond the local revenues generated by this measure. The District's proposal for the projects described below may assume the receipt of matching state funds, which, if available, could be subject to appropriation by the Legislature or approval of a statewide bond measure.

INFORMATION ABOUT ESTIMATES AND PROJECTIONS INCLUDED IN BALLOT

Voters are informed that any estimates or projections in the bond measure or ballot materials, including relating to estimated tax rates, the duration of issued bonds and related tax levies and collections are provided as informational only. Such amounts are estimates and are not maximum amounts or limitations on the terms of the bonds, the tax rate or duration of the tax supporting repayment of issued bonds. Such estimates depend on numerous variables which are subject to variation and change over the term of the District's overall facilities and bond financing plan, including but not limited to the amount of bonds issued and outstanding at any one time, the interest rates applicable to issued bonds, market conditions at the time of sale of the bonds, when bonds mature, timing of project needs and changes in assessed valuations in the District. As such, while such estimates and approximations are provided based on information currently available to the District and its current expectations, such estimates and approximations are not limitations and are not binding upon the District. In addition, the abbreviated and condensed statement of the bond measure presented to voters which is subject to a word count



limitation imposed by State law does not limit the scope and complete meaning of the measure provided in this Full Text of Bond Measure and related ballot materials.

BOND PROJECT LIST

Scope of Projects. Bond proceeds will be expended on the modernization, renovation, expansion, acquisition, construction/reconstruction, rehabilitation, and/or replacement of school facilities of the District, including the furnishing and equipping of school facilities, at all current and future sites and properties.

School Facility Project List. The items presented on the following list provide the types of school facilities projects authorized to be financed with voter-approved bond proceeds. Specific examples included on this list are not intended to limit the types of projects described and authorized by this measure. The following types of projects are authorized at all current and future school sites of the District, including:

- Modernize the football stadium including new bleachers and restrooms.
- Improve athletic facilities including tracks, dugouts and bleachers.
- Make health, safety and handicapped accessibility improvements.
- Replace outdated temporary portable classrooms with permanent classrooms or other school facilities, and/or construct new classrooms to replace temporary portable classrooms and bathrooms at continuation school.
- Upgrade physical education fields and facilities for school and community use, including rebuilding of tennis courts.
- Repair, replace and/or upgrade surfaces including parking, turf, fields, and other grounds.
- Address unforeseen conditions revealed by construction/modernization (such as plumbing or gas line breaks, dry rot, seismic, structural, etc.).
- Pave access road to stadium.
- Relocate JV girls softball field.
- Abate and remove hazardous materials identified prior or during construction.
- Other improvements required to comply with existing building codes, including the Field Act, and handicapped access requirements of the Americans with Disabilities Act.
- Necessary preparation/restoration in connection with new construction, renovation or remodeling, or installation or removal of relocatable classrooms, including ingress and egress, removing, replacing, or installing irrigation, utility lines (such as gas lines, water lines, electrical lines, sewer lines, and communication lines), trees and landscaping, relocating fire access roads, and acquiring any necessary easements, licenses, or rights of way to the property.
- Rental or construction of storage facilities and other space on an interim basis, as needed to accommodate construction materials, equipment, and personnel, and interim classrooms (including relocatables) for students and school



functions or other storage for classroom materials displaced during construction.

- All work necessary and incidental to specific projects described above, including demolition of existing structures.

Incidental Expenses. Each of the bond projects described in this Bond Project List include the costs of furnishing and equipping such facilities, and all costs which are incidental but directly related to the types of projects described above. Examples of incidental costs include, but are not limited to: costs of design, engineering, architect and other professional services, facilities assessments, inspections, site preparation, utilities, landscaping, bond project construction management, administration and other planning and permitting, legal, accounting and similar costs; independent annual financial and performance audits; a customary construction contingency; demolition and disposal of existing structures; the costs of interim housing and storage during construction including relocation and construction costs incurred relating to interim facilities; rental or construction of storage facilities and other space on an interim basis for materials and other equipment and furnishings displaced during construction; costs of relocating facilities and equipment as needed in connection with the projects; interim classrooms and facilities for students, administrators, and school functions, including modular facilities; federal and state-mandated safety upgrades; addressing unforeseen conditions revealed by construction/modernization and other necessary improvements required to comply with existing building codes, including the Field Act; access requirements of the Americans with Disabilities Act; and costs of the election; bond issuance costs; and project administration during the duration of such projects, as permitted by law.

Furnishing and Equipping. Each project is assumed to include its share of furniture, fixtures, equipment, architectural, engineering, and similar planning costs, program/project management, staff training expenses and a customary contingency for unforeseen design and construction costs. In addition to the listed projects stated above, the list also includes the acquisition of a variety of instructional, maintenance and operational equipment, including the reduction or retirement of outstanding lease obligations and interim funding incurred to advance fund projects from the list; installation of signage and fencing; payment of the costs of preparation of all facility planning, facility studies, assessment reviews, facility master plan preparation and updates, environmental studies (including environmental investigation, remediation and monitoring), design and construction documentation, and temporary housing of dislocated District activities caused by construction projects. The upgrading of technology infrastructure includes, but is not limited to, computers, LCD projectors, portable interface devices, servers, switches, routers, modules, sound projection systems, printers, digital white boards, document projectors, telephone system, call manager and network security/firewall, wireless technology systems and other miscellaneous equipment and software.

Alternations to Scope; New Construction. The scope and nature of any of the specific projects described above may be altered by the District as required by conditions that may arise during the course of design and construction. In the event that a modernization or renovation project is more economical for or otherwise determined by the Board to be in the best interests of the District to be undertaken as new construction, this bond measure authorizes said new construction including land acquisition, relocation and construction at a new or alternative site, and/or demolition and reconstruction and/or repurposing on the original site, including an expanded site, and all costs relating thereto. In addition, this



measure authorizes the acquisition of real property, including necessary rights of ways or other real property interests, required to expand District facilities, to provide access to school or other District facilities, or to provide additional school or related facilities.

Interim Financing Included; Joint Use Projects Authorized. Authorized projects include paying and/or prepaying interim or previously obtained financing for the types of projects included on the Bond Project List, such as bond anticipation notes, and includes prepayment of lease payments to acquire title to facilities and/or equipment previously financed. Projects may also be undertaken on a joint use basis with other public entities.

Bond Project List Not in Order of Priority; Board Determines Prioritization. Approval of this bond measure does not guarantee that the proposed projects will be funded beyond the local revenues generated by the measure. The District's capital needs currently exceed the amount of bonds the voters are being asked to authorize. The order in which particular projects are listed is not intended to suggest priority for funding or completion, and itemization of projects in the list above does not guarantee that all such projects will be undertaken. Project priorities will be determined by the Governing Board. The ability of the District to undertake and complete the listed projects is subject to numerous variables including the adequacy and availability of sufficient funding sources. The District is unable to anticipate all unforeseen circumstances which may prevent some of the projects listed above from being undertaken or completed.

Interpretation. The terms of this bond measure and the words used in the Bond Project List shall be interpreted broadly to effect the purpose of providing broad and clear authority for the officers and employees of the District to provide for the school facilities projects the District proposes to finance with the proceeds of the sale of bonds authorized by this proposition within the authority provided by law, including Article XIII A, Section 1(b)(3) of the California Constitution, Education Code Section 15000 *et seq.* and the Strict Accountability in Local School Construction Bonds Act of 2000. Words used in the Bond Project List such as repair, improve, upgrade, expand, modernize, renovate, and reconfigure are used to describe school facilities projects in plain English but are not intended to expand the nature of such projects beyond what is authorized by law. As such, in accordance with legal requirements, the Bond Project List does not authorize, and shall not be interpreted to authorize, expending proceeds of the sale of bonds authorized by this proposition for current maintenance, operation or repairs.

Severability. The District Board hereby declares, and the voters by approving this Bond Measure concur, that every section and part of this bond proposition has independent value, and the District Board and the voters would have adopted each provision hereof regardless of every other provision hereof. Upon approval of this measure by the voters, should any part be found by a court of competent jurisdiction to be invalid for any reason, all remaining parts hereof shall remain in full force and effect to the fullest extent allowed by law, and to this end the provisions of this bond measure are severable.



ABBREVIATED FORM OF BOND MEASURE B

To modernize the football stadium and athletic facilities; replace outdated continuation school classrooms, improve restrooms and school facilities; shall the Sutter Union High School District measure authorizing \$13,800,000 of bonds at legal rates be adopted, generating approximately \$840,000 annually as long as bonds are outstanding at a rate of approximately \$25 per \$100,000 assessed value, with annual audits, independent citizens' oversight, NO money for salaries and all money staying local?"



TAX RATE STATEMENT

An election will be held in the Sutter Union High School District (the "District") on March 5, 2024, to authorize the sale of up to \$13,800,000 in general obligation bonds. The following information is submitted in compliance with Sections 9400-9404 of the Elections Code of the State of California. Such information is based upon the best estimates and projections presently available from official sources, upon experience within the District, and other demonstrable factors.

Based upon the foregoing and projections of the District's assessed valuation, the following information is provided:

1. The best estimate of the average annual tax rate that would be required to fund this bond issue over the entire duration of the bond debt service, based on estimated assessed valuations available at the time of filing of this statement, is \$24.11 per \$100,000 of assessed valuation. It is currently expected that the tax will be collected until fiscal year 2058-59.

2. The best estimate of the highest tax rate that would be required to fund this bond issue, based on estimated assessed valuations available at the time of filing this statement, is \$25 per \$100,000 of assessed valuation. This rate is projected to apply during each year in which the bonds are outstanding.

3. The best estimate of total debt service, including principal and interest, that would be required to be repaid if all the bonds are issued and sold will be approximately \$29,398,702.

These estimates are based on projections derived from information obtained from official sources, and are based on the assessed value (not market value) of taxable property on the County's official tax rolls. In addition, taxpayers eligible for a property tax exemption, such as the homeowner's exemption, will be taxed at a lower effective tax rate than described above. Property owners should consult their own property tax bills and tax advisors to determine their property's assessed value and any applicable tax exemptions. The attention of all voters is directed to the fact that the foregoing information is based upon projections and estimates only, which amounts are not maximum amounts and durations and are not binding upon the District. The actual debt service, tax rates and the years in which they will apply may vary depending on the timing of bond sales, the par amount of bonds sold at each sale and actual increases in assessed valuations. The timing of the bond sales and the amount of bonds sold at any given time will be determined by the District based on the need for project funds and other considerations. Actual assessed valuations will depend upon the amount and value of taxable property within the District as determined by the County Assessor in the annual assessment and the equalization process.

Ryan Robinson

Superintendent
Sutter Union High School District



IMPARTIAL ANALYSIS BY THE SUTTER COUNTY COUNSEL RELATING TO BOND MEASURE B WHICH SEEKS APPROVAL TO ISSUE AND SELL BONDS BY THE SUTTER UNION HIGH SCHOOL DISTRICT

This measure was placed on the ballot by the Governing Board (Board) of the Sutter Union High School District (District). A “yes” vote is a vote to authorize bonds. A “no” vote is a vote against issuing the proposed bonds.

If affirmed by 55% of the electorate in the District, Measure B will authorize the issuance of new general obligation bonds in the maximum principal amount of \$13,800,000. Bond proceeds may be used to fund the types of projects included on the Bond Project List as set forth in the bond measure. Bond proceeds may be expended on the modernization, renovation, expansion, acquisition, construction, furnishing, equipping, rehabilitation, or replacement of the District’s school facilities. Authorized projects include but are not limited to modernizing the football stadium and bleachers, improving tracks and dugouts, and replacing temporary portable classrooms with permanent facilities.

Projects may be undertaken at all current and future District sites and properties, and on a joint use basis with other public entities. Bond proceeds may also be used for incidental expenses such as design and planning costs, construction management, inspections and administration, legal and accounting costs, and unforeseen conditions discovered as projects are undertaken. Proceeds of the bonds may not be used for any teachers’ or administrative salaries or other school operating expenses.

The Board has certified that it has evaluated safety, class size reduction, enrollment growth, and information technology needs in developing the Bond Project List. If this bond measure is approved, the Board will establish and appoint members to an independent citizens’ oversight committee to actively review and report to the public whether bond proceeds are used as authorized. The Board will also conduct annual, independent performance and financial audits to ensure that bond proceeds have been expended only on the types of projects described in the measure.

Approval of this bond measure does not guarantee that the proposed projects will be funded beyond the local revenues generated by the bond measure. The District’s capital needs currently exceed the amount of bonds the voters are being asked to authorize. The District’s proposals for the projects may assume the receipt of matching state funds, which could be subject to appropriation by the Legislature or approval of a statewide bond measure, and therefore passage of the bond measure is not a guarantee that any projects will be completed.

Measure B will not otherwise affect existing law. This analysis is submitted by the Sutter County Counsel as required under Elections Code section 9500.

Dated: December 6, 2023
Deborah Micheli, County Counsel
By: Cameron King, Deputy County Counsel



ARGUMENT IN FAVOR OF MEASURE B

Sutter Union High School District

Sutter Union High School is the most important asset in our community and should be our first priority. Quality schools improve student achievement, improve property values, prepare students for a productive future, and create greater neighborhood safety. Our teachers and staff do a great job educating local children, but classrooms, buildings, and athletic fields in the Sutter Union High School District need to be upgraded to provide students with school facilities they need to succeed.

Our students need your **YES vote on Measure B!** Although Sutter High has been well maintained, aging athletic facilities must be upgraded since many do not meet 21st century standards. Measure B would allow the District to improve our local high school's athletic facilities and the quality of education provided to local students. By investing in our high school, we can meet today's safety, technological, and educational standards as well as improve our community.

If passed, Measure B will provide funding to make critical facility improvements to Sutter Union High School including:

- Modernizing the multi-sport stadium, including new bleachers and restrooms
- Reconstructing tennis/pickleball courts
- Making health, safety, and handicapped accessibility improvements
- Replacing outdated portable classrooms with permanent classrooms
- Improving athletic facilities, including tracks, dugouts and bleachers
- Upgrading PE fields and facilities for school and community use

Measure B makes financial sense and protects taxpayers.

- By law, spending must be annually audited and reviewed by an independent citizens' oversight committee.
- All bond funds must be spent locally and **cannot be taken by the State.**
- Funds are required to be spent only on our school, not for administrator or teacher salaries.

Measure B upgrades and renovates athletic fields, and other school facilities, improves the education of local students, and maintains the quality of our community. That's something we can all support. Please VOTE YES ON MEASURE B!

s/Ralph Scott Turner
s/Robbie Sanborn
s/Ron Kelley
s/Dennis Richardson
s/Anson Clark Dobson





51-SB4-DA



OFFICIAL BALLOT
Presidential Primary Election
DEMOCRATIC PARTY
Tuesday, March 5, 2024
County of Sutter



BT-4

INSTRUCTIONS TO VOTERS:

Completely fill in the oval to the left of your choice. Use a blue or black ink pen to mark your ballot. NO RED ink.

Only qualified write-in candidate votes will be counted. Write that person's name in the write-in space and fill in the oval.

If you make a mistake, clearly mark your intended choice and strikeout the mistake. If you would like a replacement ballot, contact our office or a poll worker.



Party-Nominated Offices
 Voters registered as a member of the Democratic Party may vote in this primary election for President and party committee. Some parties may allow voters with no party preference to vote in the party's primary election for President.

Voter-Nominated Offices
 All voters may vote in these contests. Candidates display a party preference (or None) for the information of voters. This is not a party endorsement or approval.

VOTER-NOMINATED OFFICES

UNITED STATES SENATOR

PARTY-NOMINATED OFFICES

PRESIDENT OF THE UNITED STATES

Presidential Preference

Vote for One

GABRIEL CORNEJO

PRESIDENT R BODDIE

JOSEPH R BIDEN JR

MARIANNE WILLIAMSON

DEAN PHILLIPS

ARMANDO "MANDO" PEREZ-SERRATO

STEPHEN P LYONS

There are two U.S. Senate contests on this ballot.

- One for the regular 6-year term ending January 3, 2031
 - One for the remainder of the current term ending January 3, 2025
- You may vote for both contests.

**United States Senator
(Full Term)**

Vote for One

LAURA GARZA
 Party Preference: None
 Freight Railroad Worker

SEPI GILANI
 Party Preference: Democratic
 Physician/Surgeon/Professor

DON J. GRUNDMANN
 Party Preference: None
 Doctor of Chiropractic

FORREST JONES
 Party Preference: American Independent

BARBARA LEE
 Party Preference: Democratic
 Congresswoman/Mother

GAIL LIGHTFOOT
 Party Preference: Libertarian
 Retired Registered Nurse

SARAH SUN LIEW
 Party Preference: Republican
 Pastor/Nonprofit CEO

CHRISTINA PASCUCCI
 Party Preference: Democratic

DAVID PETERSON
 Party Preference: Democratic
 Small Business Owner

PERRY POUND
 Party Preference: Democratic
 Small Business Owner

KATIE PORTER
 Party Preference: Democratic
 U.S. Representative

DOUGLAS H. PIERCE
 Party Preference: Democratic
 Missing Persons' Investigator

RAJI RAB
 Party Preference: Democratic
 Aviator/Educator/Entrepreneur

MARK RUZON
 Party Preference: None
 Software Engineer

SAMPLE BALLOT

<input type="radio"/> EBAN CAMBRIDGE
<input type="radio"/>
Write-in

<input type="radio"/> SHARLETA BASSETT Party Preference: Republican Businesswoman/Mother/Farmer	<input type="radio"/> JONATHAN REISS Party Preference: Republican
<input type="radio"/> JAMES BRADLEY Party Preference: Republican Chief Executive Officer	<input type="radio"/> JOHN ROSE Party Preference: Democratic Office Manager
<input type="radio"/> MARTIN VEPRAUSKAS Party Preference: Republican Retired Operations Manager	<input type="radio"/> HARMESH KUMAR Party Preference: Democratic Psychologist/Social Entrepreneur
<input type="radio"/> ERIC EARLY Party Preference: Republican Business Owner/Attorney	<input type="radio"/> JAMES "JIM" MACAULEY Party Preference: Republican Sales Associate
<input type="radio"/> ADAM B. SCHIFF Party Preference: Democratic United States Representative	<input type="radio"/> STEVE GARVEY Party Preference: Republican Professional Baseball Representative
<input type="radio"/> MAJOR SINGH Party Preference: None Software Engineer	<input type="radio"/> DENICE GARY-PANDOL Party Preference: Republican Retired Security Analyst
<input type="radio"/> STEFAN SIMCHOWITZ Party Preference: Republican Art Dealer	<input type="radio"/>
United States Senator (Partial/Unexpired Term)	
Vote for One	
<input type="radio"/> BARBARA LEE Party Preference: Democratic Congresswoman/Mother	<input type="radio"/> KATIE PORTER Party Preference: Democratic U.S. Representative
<input type="radio"/> ERIC EARLY Party Preference: Republican Business Owner/Attorney	<input type="radio"/> STEVE GARVEY Party Preference: Republican Professional Baseball Representative
<input type="radio"/> ADAM B. SCHIFF Party Preference: Democratic United States Representative	<input type="radio"/> SEPI GILANI Party Preference: Democratic Physician/Surgeon/Professor
<input type="radio"/> CHRISTINA PASCUCCI Party Preference: Democratic	<input type="radio"/>
	Write-in

SAMPLE BALLOT

51-SB4-DB



VOTE BOTH SIDES OF BALLOT



51-SB4-DC

VOTER-NOMINATED OFFICES	MEASURES SUBMITTED TO THE VOTERS
UNITED STATES REPRESENTATIVE	STATE
United States Representative District 1	1 AUTHORIZES \$6.38 BILLION IN BONDS TO BUILD MENTAL HEALTH TREATMENT FACILITIES FOR THOSE WITH MENTAL HEALTH AND SUBSTANCE USE CHALLENGES; PROVIDES HOUSING FOR THE HOMELESS. LEGISLATIVE STATUTE. Amends Mental Health Services Act to provide additional behavioral health services. Fiscal impact: Shift roughly \$140 million annually of existing tax revenue for mental health, drug, and alcohol treatment from counties to the state. Increased state bond repayment costs of \$310 million annually for 30 years. Supporters: California Professional Firefighters; CA Assoc. of Veteran Service Agencies; National Alliance on Mental Illness - CA Opponents: Mental Health America of California; Howard Jarvis Taxpayers Association; CalVoices
<input type="radio"/> ROSE PENELOPE YEE Party Preference: Democratic Finance Businesswoman/Investor Vote for One	
<input type="radio"/> MIKE DORAN Party Preference: Democratic School Board Member	
<input type="radio"/> DOUG LAMALFA Party Preference: Republican Farmer/United States Representative <input type="radio"/> Write-in	
STATE SENATOR	
State Senator District 1	
<input type="radio"/> MEGAN DAHLE Party Preference: Republican Farmer/Businesswoman/Mother Vote for One	<input type="radio"/> YES <input type="radio"/> NO
<input type="radio"/> DAVID FENNELL Party Preference: Republican Entrepreneur <input type="radio"/> Write-in	SCHOOL Measure B Sutter Union High School BOND 55%
MEMBER OF THE STATE ASSEMBLY	
State Assembly Member District 3	B To modernize the football stadium and athletic facilities; replace outdated continuation school classrooms, improve restrooms and school facilities; shall the Sutter Union High School District measure authorizing \$13,800,000 of bonds at legal rates be adopted, generating approximately \$840,000 annually as long as bonds are outstanding at a rate of approximately \$25 per \$100,000 assessed value, with annual audits, independent citizens' oversight, NO money for salaries and all money staying local? <input type="radio"/> BONDS YES <input type="radio"/> BONDS NO
<input type="radio"/> AARON DRAPER Party Preference: Democratic Professor/Photographer Vote for One	
<input type="radio"/> JAMIE "JAMES" GALLAGHER Party Preference: Republican Assemblyman/Farmer/Businessman	
<input type="radio"/> Write-in	

SAMPLE BALLOT

SAMPLE BALLOT

VOTE BOTH SIDES OF BALLOT

51-SB4-DD





51-SB4-RA



OFFICIAL BALLOT
Republican Primary Election
REPUBLICAN PARTY
Tuesday, March 5, 2024
County of Sutter



BT-4

INSTRUCTIONS TO VOTERS:

Completely fill in the oval to the left of your choice. Use a blue or black ink pen to mark your ballot. NO RED ink.

Only qualified write-in candidate votes will be counted. Write that person's name in the write-in space and fill in the oval.

If you make a mistake, clearly mark your intended choice and strikeout the mistake. If you would like a replacement ballot, contact our office or a poll worker.



Party-Nominated Offices
 Only voters registered as a member of the Republican Party may vote in this primary election for President and party committee.

Voter-Nominated Offices
 All voters may vote in these contests. Candidates display a party preference (or None) for the information of voters. This is not a party endorsement or approval.

VOTER-NOMINATED OFFICES

PARTY-NOMINATED OFFICES

UNITED STATES SENATOR

PRESIDENT OF THE UNITED STATES

There are two U.S. Senate contests on this ballot.

- One for the regular 6-year term ending January 3, 2031
 - One for the remainder of the current term ending January 3, 2025
- You may vote for both contests.

Presidential Preference

Vote for One

DONALD J. TRUMP

**United States Senator
(Full Term)**

Vote for One

CHRIS CHRISTIE

LAURA GARZA
 Party Preference: None
 Freight Railroad Worker

CHRISTINA PASCUCCI
 Party Preference: Democratic

RYAN L BINKLEY

SEPI GILANI
 Party Preference: Democratic
 Physician/Surgeon/Professor

DAVID PETERSON
 Party Preference: Democratic
 Small Business Owner

DAVID STUCKENBERG

DON J. GRUNDMANN
 Party Preference: None
 Doctor of Chiropractic

PERRY POUND
 Party Preference: Democratic
 Small Business Owner

RACHEL SWIFT

FORREST JONES
 Party Preference: American Independent

KATIE PORTER
 Party Preference: Democratic
 U.S. Representative

RON DESANTIS

BARBARA LEE
 Party Preference: Democratic
 Congresswoman/Mother

DOUGLAS H. PIERCE
 Party Preference: Democratic
 Missing Persons' Investigator

VIVEK RAMASWAMY

GAIL LIGHTFOOT
 Party Preference: Libertarian
 Retired Registered Nurse

RAJI RAB
 Party Preference: Democratic
 Aviator/Educator/Entrepreneur

NIKKI HALEY

SARAH SUN LIEW
 Party Preference: Republican
 Pastor/Nonprofit CEO

MARK RUZON
 Party Preference: None
 Software Engineer

SAMPLE BALLOT

<input type="radio"/> ASA HUTCHINSON	<input type="radio"/> SHARLETA BASSETT Party Preference: Republican Businesswoman/Mother/Farmer	<input type="radio"/> JONATHAN REISS Party Preference: Republican
<input type="radio"/>	<input type="radio"/> JAMES BRADLEY Party Preference: Republican Chief Executive Officer	<input type="radio"/> JOHN ROSE Party Preference: Democratic Office Manager
Write-in	<input type="radio"/> MARTIN VEPRASKAS Party Preference: Republican Retired Operations Manager	<input type="radio"/> HARMESH KUMAR Party Preference: Democratic Psychologist/Social Entrepreneur
	<input type="radio"/> ERIC EARLY Party Preference: Republican Business Owner/Attorney	<input type="radio"/> JAMES "JIM" MACAULEY Party Preference: Republican Sales Associate
	<input type="radio"/> ADAM B. SCHIFF Party Preference: Democratic United States Representative	<input type="radio"/> STEVE GARVEY Party Preference: Republican Professional Baseball Representative
	<input type="radio"/> MAJOR SINGH Party Preference: None Software Engineer	<input type="radio"/> DENICE GARY-PANDOL Party Preference: Republican Retired Security Analyst
	<input type="radio"/> STEFAN SIMCHOWITZ Party Preference: Republican Art Dealer	<input type="radio"/>
Write-in		
United States Senator (Partial/Unexpired Term)		
Vote for One		
<input type="radio"/> BARBARA LEE Party Preference: Democratic Congresswoman/Mother	<input type="radio"/> KATIE PORTER Party Preference: Democratic U.S. Representative	
<input type="radio"/> ERIC EARLY Party Preference: Republican Business Owner/Attorney	<input type="radio"/> STEVE GARVEY Party Preference: Republican Professional Baseball Representative	
<input type="radio"/> ADAM B. SCHIFF Party Preference: Democratic United States Representative	<input type="radio"/> SEPI GILANI Party Preference: Democratic Physician/Surgeon/Professor	
<input type="radio"/> CHRISTINA PASCUCCI Party Preference: Democratic	<input type="radio"/>	
	Write-in	

SAMPLE BALLOT

51-SB4-RB



VOTE BOTH SIDES OF BALLOT



51-SB4-RC

VOTER-NOMINATED OFFICES	MEASURES SUBMITTED TO THE VOTERS
UNITED STATES REPRESENTATIVE	STATE
United States Representative District 1	<p>1 AUTHORIZES \$6.38 BILLION IN BONDS TO BUILD MENTAL HEALTH TREATMENT FACILITIES FOR THOSE WITH MENTAL HEALTH AND SUBSTANCE USE CHALLENGES; PROVIDES HOUSING FOR THE HOMELESS. LEGISLATIVE STATUTE.</p> <p>Amends Mental Health Services Act to provide additional behavioral health services. Fiscal Impact: Shift roughly \$140 million annually of existing tax revenue for mental health, drug, and alcohol treatment from counties to the state. Increased state bond repayment costs of \$310 million annually for 30 years.</p> <p>Supporters: California Professional Firefighters; CA Assoc. of Veteran Service Agencies; National Alliance on Mental Illness - CA</p> <p>Opponents: Mental Health America of California; Howard Jarvis Taxpayers Association; CalVoices</p>
<input type="radio"/> ROSE PENELOPE YEE Party Preference: Democratic Finance Businesswoman/Investor	
<input type="radio"/> MIKE DORAN Party Preference: Democratic School Board Member	
<input type="radio"/> DOUG LAMALFA Party Preference: Republican Farmer/United States Representative	
<input type="radio"/> Write-in	
STATE SENATOR	
State Senator District 1	
<input type="radio"/> MEGAN DAHLE Party Preference: Republican Farmer/Businesswoman/Mother	<input type="radio"/> YES
<input type="radio"/> DAVID FENNELL Party Preference: Republican Entrepreneur	<input type="radio"/> NO
<input type="radio"/> Write-in	
MEMBER OF THE STATE ASSEMBLY	SCHOOL
State Assembly Member District 3	Measure B Sutter Union High School BOND 55%
<input type="radio"/> AARON DRAPER Party Preference: Democratic Professor/Photographer	<p>B To modernize the football stadium and athletic facilities; replace outdated continuation school classrooms, improve restrooms and school facilities; shall the Sutter Union High School District measure authorizing \$13,800,000 of bonds at legal rates be adopted, generating approximately \$840,000 annually as long as bonds are outstanding at a rate of approximately \$25 per \$100,000 assessed value, with annual audits, independent citizens' oversight, NO money for salaries and all money staying local?</p>
<input type="radio"/> JAMIE "JAMES" GALLAGHER Party Preference: Republican Assemblyman/Farmer/Businessman	
<input type="radio"/> Write-in	
	<input type="radio"/> BONDS YES
	<input type="radio"/> BONDS NO

SAMPLE BALLOT

SAMPLE BALLOT

VOTE BOTH SIDES OF BALLOT

51-SB4-RD





51-SB4-AA



OFFICIAL BALLOT
Presidential Primary Election
AMERICAN INDEPENDENT PARTY
Tuesday, March 5, 2024
County of Sutter



BT-4

INSTRUCTIONS TO VOTERS:

Completely fill in the oval to the left of your choice. Use a blue or black ink pen to mark your ballot. NO RED ink.

Only qualified write-in candidate votes will be counted. Write that person's name in the write-in space and fill in the oval.

If you make a mistake, clearly mark your intended choice and strikeout the mistake. If you would like a replacement ballot, contact our office or a poll worker.



Party-Nominated Offices
 Voters registered as a member of the American Independent Party may vote in this primary election for President and party committee. Some parties may allow voters with no party preference to vote in the party's primary election for President.

Voter-Nominated Offices
 All voters may vote in these contests. Candidates display a party preference (or None) for the information of voters. This is not a party endorsement or approval.

VOTER-NOMINATED OFFICES

UNITED STATES SENATOR

PARTY-NOMINATED OFFICES

PRESIDENT OF THE UNITED STATES

Presidential Preference

Vote for One

JAMES BRADLEY

Write-in

There are two U.S. Senate contests on this ballot.

- One for the regular 6-year term ending January 3, 2031
 - One for the remainder of the current term ending January 3, 2025
- You may vote for both contests.

**United States Senator
(Full Term)**

Vote for One

LAURA GARZA
 Party Preference: None
 Freight Railroad Worker

CHRISTINA PASCUCCI
 Party Preference: Democratic

SEPI GILANI
 Party Preference: Democratic
 Physician/Surgeon/Professor

DAVID PETERSON
 Party Preference: Democratic
 Small Business Owner

DON J. GRUNDMANN
 Party Preference: None
 Doctor of Chiropractic

PERRY POUND
 Party Preference: Democratic
 Small Business Owner

FORREST JONES
 Party Preference: American Independent

KATIE PORTER
 Party Preference: Democratic
 U.S. Representative

BARBARA LEE
 Party Preference: Democratic
 Congresswoman/Mother

DOUGLAS H. PIERCE
 Party Preference: Democratic
 Missing Persons' Investigator

GAIL LIGHTFOOT
 Party Preference: Libertarian
 Retired Registered Nurse

RAJI RAB
 Party Preference: Democratic
 Aviator/Educator/Entrepreneur

SARAH SUN LIEW
 Party Preference: Republican
 Pastor/Nonprofit CEO

MARK RUZON
 Party Preference: None
 Software Engineer

SAMPLE BALLOT

SAMPLE BALLOT

<input type="radio"/> SHARLETA BASSETT Party Preference: Republican Businesswoman/Mother/Farmer	<input type="radio"/> JONATHAN REISS Party Preference: Republican
<input type="radio"/> JAMES BRADLEY Party Preference: Republican Chief Executive Officer	<input type="radio"/> JOHN ROSE Party Preference: Democratic Office Manager
<input type="radio"/> MARTIN VEPRausKAS Party Preference: Republican Retired Operations Manager	<input type="radio"/> HARMESH KUMAR Party Preference: Democratic Psychologist/Social Entrepreneur
<input type="radio"/> ERIC EARLY Party Preference: Republican Business Owner/Attorney	<input type="radio"/> JAMES "JIM" MACAULEY Party Preference: Republican Sales Associate
<input type="radio"/> ADAM B. SCHIFF Party Preference: Democratic United States Representative	<input type="radio"/> STEVE GARVEY Party Preference: Republican Professional Baseball Representative
<input type="radio"/> MAJOR SINGH Party Preference: None Software Engineer	<input type="radio"/> DENICE GARY-PANDOL Party Preference: Republican Retired Security Analyst
<input type="radio"/> STEFAN SIMCHOWITZ Party Preference: Republican Art Dealer	<input type="radio"/> _____ <small>Write-in</small>
United States Senator (Partial/Unexpired Term)	
Vote for One	
<input type="radio"/> BARBARA LEE Party Preference: Democratic Congresswoman/Mother	<input type="radio"/> KATIE PORTER Party Preference: Democratic U.S. Representative
<input type="radio"/> ERIC EARLY Party Preference: Republican Business Owner/Attorney	<input type="radio"/> STEVE GARVEY Party Preference: Republican Professional Baseball Representative
<input type="radio"/> ADAM B. SCHIFF Party Preference: Democratic United States Representative	<input type="radio"/> SEPI GILANI Party Preference: Democratic Physician/Surgeon/Professor
<input type="radio"/> CHRISTINA PASCUCCI Party Preference: Democratic	<input type="radio"/> _____ <small>Write-in</small>

51-SB4-AB





51-SB4-AC

VOTER-NOMINATED OFFICES	MEASURES SUBMITTED TO THE VOTERS
UNITED STATES REPRESENTATIVE	STATE
United States Representative District 1 Vote for One	1 AUTHORIZES \$6.38 BILLION IN BONDS TO BUILD MENTAL HEALTH TREATMENT FACILITIES FOR THOSE WITH MENTAL HEALTH AND SUBSTANCE USE CHALLENGES; PROVIDES HOUSING FOR THE HOMELESS. LEGISLATIVE STATUTE. Amends Mental Health Services Act to provide additional behavioral health services. Fiscal Impact: Shift roughly \$140 million annually of existing tax revenue for mental health, drug, and alcohol treatment from counties to the state. Increased state bond repayment costs of \$310 million annually for 30 years. Supporters: California Professional Firefighters; CA Assoc. of Veteran Service Agencies; National Alliance on Mental Illness - CA Opponents: Mental Health America of California; Howard Jarvis Taxpayers Association; CalVoices
<input type="radio"/> ROSE PENELOPE YEE Party Preference: Democratic Finance Businesswoman/Investor	
<input type="radio"/> MIKE DORAN Party Preference: Democratic School Board Member	
<input type="radio"/> DOUG LAMALFA Party Preference: Republican Farmer/United States Representative	
<input type="radio"/> Write-in	
STATE SENATOR	
State Senator District 1 Vote for One	
<input type="radio"/> MEGAN DAHLE Party Preference: Republican Farmer/Businesswoman/Mother	<input type="radio"/> YES
<input type="radio"/> DAVID FENNELL Party Preference: Republican Entrepreneur	<input type="radio"/> NO
<input type="radio"/> Write-in	
MEMBER OF THE STATE ASSEMBLY	SCHOOL
State Assembly Member District 3 Vote for One	Measure B Sutter Union High School BOND 55%
<input type="radio"/> AARON DRAPER Party Preference: Democratic Professor/Photographer	B To modernize the football stadium and athletic facilities; replace outdated continuation school classrooms, improve restrooms and school facilities; shall the Sutter Union High School District measure authorizing \$13,800,000 of bonds at legal rates be adopted, generating approximately \$840,000 annually as long as bonds are outstanding at a rate of approximately \$25 per \$100,000 assessed value, with annual audits, independent citizens' oversight, NO money for salaries and all money staying local?
<input type="radio"/> JAMIE "JAMES" GALLAGHER Party Preference: Republican Assemblyman/Farmer/Businessman	
<input type="radio"/> Write-in	<input type="radio"/> BONDS YES
	<input type="radio"/> BONDS NO

SAMPLE BALLOT

SAMPLE BALLOT

VOTE BOTH SIDES OF BALLOT

51-SB4-AD





51-SB4-GA



OFFICIAL BALLOT
Presidential Primary Election
GREEN PARTY
Tuesday, March 5, 2024
County of Sutter



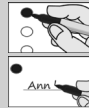
BT-4

INSTRUCTIONS TO VOTERS:

Completely fill in the oval to the left of your choice. Use a blue or black ink pen to mark your ballot. NO RED ink.

Only qualified write-in candidate votes will be counted. Write that person's name in the write-in space and fill in the oval.

If you make a mistake, clearly mark your intended choice and strikeout the mistake. If you would like a replacement ballot, contact our office or a poll worker.



Party-Nominated Offices
 Only voters registered as a member of the Green Party may vote in this primary election for President and party committee.

Voter-Nominated Offices
 All voters may vote in these contests. Candidates display a party preference (or None) for the information of voters. This is not a party endorsement or approval.

VOTER-NOMINATED OFFICES

PARTY-NOMINATED OFFICES

UNITED STATES SENATOR

PRESIDENT OF THE UNITED STATES

Presidential Candidate Preference
 Delegates to the national convention will be selected after the presidential preference primary election.

There are two U.S. Senate contests on this ballot.

- One for the regular 6-year term ending January 3, 2031
 - One for the remainder of the current term ending January 3, 2025
- You may vote for both contests.

Vote for a Candidate

**United States Senator
(Full Term)**

JILL STEIN

Write-in

United States Senator (Full Term)		Vote for One
<input type="radio"/> LAURA GARZA Party Preference: None Freight Railroad Worker	<input type="radio"/> CHRISTINA PASCUCCI Party Preference: Democratic	
<input type="radio"/> SEPI GILANI Party Preference: Democratic Physician/Surgeon/Professor	<input type="radio"/> DAVID PETERSON Party Preference: Democratic Small Business Owner	
<input type="radio"/> DON J. GRUNDMANN Party Preference: None Doctor of Chiropractic	<input type="radio"/> PERRY POUND Party Preference: Democratic Small Business Owner	
<input type="radio"/> FORREST JONES Party Preference: American Independent	<input type="radio"/> KATIE PORTER Party Preference: Democratic U.S. Representative	
<input type="radio"/> BARBARA LEE Party Preference: Democratic Congresswoman/Mother	<input type="radio"/> DOUGLAS H. PIERCE Party Preference: Democratic Missing Persons' Investigator	
<input type="radio"/> GAIL LIGHTFOOT Party Preference: Libertarian Retired Registered Nurse	<input type="radio"/> RAJI RAB Party Preference: Democratic Aviator/Educator/Entrepreneur	
<input type="radio"/> SARAH SUN LIEW Party Preference: Republican Pastor/Nonprofit CEO	<input type="radio"/> MARK RUZON Party Preference: None Software Engineer	

SAMPLE BALLOT



<input type="radio"/> SHARLETA BASSETT Party Preference: Republican Businesswoman/Mother/Farmer	<input type="radio"/> JONATHAN REISS Party Preference: Republican
<input type="radio"/> JAMES BRADLEY Party Preference: Republican Chief Executive Officer	<input type="radio"/> JOHN ROSE Party Preference: Democratic Office Manager
<input type="radio"/> MARTIN VEPRausKAS Party Preference: Republican Retired Operations Manager	<input type="radio"/> HARMESH KUMAR Party Preference: Democratic Psychologist/Social Entrepreneur
<input type="radio"/> ERIC EARLY Party Preference: Republican Business Owner/Attorney	<input type="radio"/> JAMES "JIM" MACAULEY Party Preference: Republican Sales Associate
<input type="radio"/> ADAM B. SCHIFF Party Preference: Democratic United States Representative	<input type="radio"/> STEVE GARVEY Party Preference: Republican Professional Baseball Representative
<input type="radio"/> MAJOR SINGH Party Preference: None Software Engineer	<input type="radio"/> DENICE GARY-PANDOL Party Preference: Republican Retired Security Analyst
<input type="radio"/> STEFAN SIMCHOWITZ Party Preference: Republican Art Dealer	<input type="radio"/> <small>Write-in</small>
United States Senator (Partial/Unexpired Term)	
Vote for One	
<input type="radio"/> BARBARA LEE Party Preference: Democratic Congresswoman/Mother	<input type="radio"/> KATIE PORTER Party Preference: Democratic U.S. Representative
<input type="radio"/> ERIC EARLY Party Preference: Republican Business Owner/Attorney	<input type="radio"/> STEVE GARVEY Party Preference: Republican Professional Baseball Representative
<input type="radio"/> ADAM B. SCHIFF Party Preference: Democratic United States Representative	<input type="radio"/> SEPI GILANI Party Preference: Democratic Physician/Surgeon/Professor
<input type="radio"/> CHRISTINA PASCUCCI Party Preference: Democratic	<input type="radio"/> <small>Write-in</small>

SAMPLE BALLOT



51-SB4-GC

VOTER-NOMINATED OFFICES	MEASURES SUBMITTED TO THE VOTERS
UNITED STATES REPRESENTATIVE	STATE
United States Representative District 1	1 AUTHORIZES \$6.38 BILLION IN BONDS TO BUILD MENTAL HEALTH TREATMENT FACILITIES FOR THOSE WITH MENTAL HEALTH AND SUBSTANCE USE CHALLENGES; PROVIDES HOUSING FOR THE HOMELESS. LEGISLATIVE STATUTE. Amends Mental Health Services Act to provide additional behavioral health services. Fiscal Impact: Shift roughly \$140 million annually of existing tax revenue for mental health, drug, and alcohol treatment from counties to the state. Increased state bond repayment costs of \$310 million annually for 30 years. Supporters: California Professional Firefighters; CA Assoc. of Veteran Service Agencies; National Alliance on Mental Illness – CA Opponents: Mental Health America of California; Howard Jarvis Taxpayers Association; CalVoices
<i>Vote for One</i>	
<input type="radio"/> ROSE PENELOPE YEE Party Preference: Democratic Finance Businesswoman/Investor	
<input type="radio"/> MIKE DORAN Party Preference: Democratic School Board Member	
<input type="radio"/> DOUG LAMALFA Party Preference: Republican Farmer/United States Representative <input type="radio"/> <small>Write-in</small>	
STATE SENATOR	
State Senator District 1	
<i>Vote for One</i>	
<input type="radio"/> MEGAN DAHLE Party Preference: Republican Farmer/Businesswoman/Mother	<input type="radio"/> YES <input type="radio"/> NO
<input type="radio"/> DAVID FENNELL Party Preference: Republican Entrepreneur <input type="radio"/> <small>Write-in</small>	SCHOOL Measure B Sutter Union High School BOND 55%
MEMBER OF THE STATE ASSEMBLY	
State Assembly Member District 3	
<i>Vote for One</i>	
<input type="radio"/> AARON DRAPER Party Preference: Democratic Professor/Photographer	B To modernize the football stadium and athletic facilities; replace outdated continuation school classrooms, improve restrooms and school facilities; shall the Sutter Union High School District measure authorizing \$13,800,000 of bonds at legal rates be adopted, generating approximately \$840,000 annually as long as bonds are outstanding at a rate of approximately \$25 per \$100,000 assessed value, with annual audits, independent citizens' oversight, NO money for salaries and all money staying local?
<input type="radio"/> JAMIE "JAMES" GALLAGHER Party Preference: Republican Assemblyman/Farmer/Businessman	
<input type="radio"/> <small>Write-in</small>	
	<input type="radio"/> BONDS YES <input type="radio"/> BONDS NO

SAMPLE BALLOT

SAMPLE BALLOT

VOTE BOTH SIDES OF BALLOT

51-SB4-GD





51-SB4-LA



OFFICIAL BALLOT
Presidential Primary Election
LIBERTARIAN PARTY
Tuesday, March 5, 2024
County of Sutter



BT-4

INSTRUCTIONS TO VOTERS:

Completely fill in the oval to the left of your choice. Use a blue or black ink pen to mark your ballot. NO RED ink.

Only qualified write-in candidate votes will be counted. Write that person's name in the write-in space and fill in the oval.

If you make a mistake, clearly mark your intended choice and strikeout the mistake. If you would like a replacement ballot, contact our office or a poll worker.



Party-Nominated Offices
 Voters registered as a member of the Libertarian Party may vote in this primary election for President and party committee. Some parties may allow voters with no party preference to vote in the party's primary election for President.

Voter-Nominated Offices
 All voters may vote in these contests. Candidates display a party preference (or None) for the information of voters. This is not a party endorsement or approval.

VOTER-NOMINATED OFFICES

UNITED STATES SENATOR

PARTY-NOMINATED OFFICES

PRESIDENT OF THE UNITED STATES

Presidential Preference

Vote for One

CHARLES BALLAY

Write-in

There are two U.S. Senate contests on this ballot.

- One for the regular 6-year term ending January 3, 2031
 - One for the remainder of the current term ending January 3, 2025
- You may vote for both contests.

**United States Senator
(Full Term)**

Vote for One

LAURA GARZA
 Party Preference: None
 Freight Railroad Worker

CHRISTINA PASCUCCI
 Party Preference: Democratic

SEPI GILANI
 Party Preference: Democratic
 Physician/Surgeon/Professor

DAVID PETERSON
 Party Preference: Democratic
 Small Business Owner

DON J. GRUNDMANN
 Party Preference: None
 Doctor of Chiropractic

PERRY POUND
 Party Preference: Democratic
 Small Business Owner

FORREST JONES
 Party Preference: American Independent

KATIE PORTER
 Party Preference: Democratic
 U.S. Representative

BARBARA LEE
 Party Preference: Democratic
 Congresswoman/Mother

DOUGLAS H. PIERCE
 Party Preference: Democratic
 Missing Persons' Investigator

GAIL LIGHTFOOT
 Party Preference: Libertarian
 Retired Registered Nurse

RAJI RAB
 Party Preference: Democratic
 Aviator/Educator/Entrepreneur

SARAH SUN LIEW
 Party Preference: Republican
 Pastor/Nonprofit CEO

MARK RUZON
 Party Preference: None
 Software Engineer

SAMPLE BALLOT



<input type="radio"/> SHARLETA BASSETT Party Preference: Republican Businesswoman/Mother/Farmer	<input type="radio"/> JONATHAN REISS Party Preference: Republican
<input type="radio"/> JAMES BRADLEY Party Preference: Republican Chief Executive Officer	<input type="radio"/> JOHN ROSE Party Preference: Democratic Office Manager
<input type="radio"/> MARTIN VEPRAUSKAS Party Preference: Republican Retired Operations Manager	<input type="radio"/> HARMESH KUMAR Party Preference: Democratic Psychologist/Social Entrepreneur
<input type="radio"/> ERIC EARLY Party Preference: Republican Business Owner/Attorney	<input type="radio"/> JAMES "JIM" MACAULEY Party Preference: Republican Sales Associate
<input type="radio"/> ADAM B. SCHIFF Party Preference: Democratic United States Representative	<input type="radio"/> STEVE GARVEY Party Preference: Republican Professional Baseball Representative
<input type="radio"/> MAJOR SINGH Party Preference: None Software Engineer	<input type="radio"/> DENICE GARY-PANDOL Party Preference: Republican Retired Security Analyst
<input type="radio"/> STEFAN SIMCHOWITZ Party Preference: Republican Art Dealer	<input type="radio"/> Write-in
United States Senator (Partial/Unexpired Term)	
Vote for One	
<input type="radio"/> BARBARA LEE Party Preference: Democratic Congresswoman/Mother	<input type="radio"/> KATIE PORTER Party Preference: Democratic U.S. Representative
<input type="radio"/> ERIC EARLY Party Preference: Republican Business Owner/Attorney	<input type="radio"/> STEVE GARVEY Party Preference: Republican Professional Baseball Representative
<input type="radio"/> ADAM B. SCHIFF Party Preference: Democratic United States Representative	<input type="radio"/> SEPI GILANI Party Preference: Democratic Physician/Surgeon/Professor
<input type="radio"/> CHRISTINA PASCUCCI Party Preference: Democratic	<input type="radio"/> Write-in

SAMPLE BALLOT



51-SB4-LC

VOTER-NOMINATED OFFICES	MEASURES SUBMITTED TO THE VOTERS
UNITED STATES REPRESENTATIVE	STATE
United States Representative District 1	1 AUTHORIZES \$6.38 BILLION IN BONDS TO BUILD MENTAL HEALTH TREATMENT FACILITIES FOR THOSE WITH MENTAL HEALTH AND SUBSTANCE USE CHALLENGES; PROVIDES HOUSING FOR THE HOMELESS. LEGISLATIVE STATUTE. Amends Mental Health Services Act to provide additional behavioral health services. Fiscal Impact: Shift roughly \$140 million annually of existing tax revenue for mental health, drug, and alcohol treatment from counties to the state. Increased state bond repayment costs of \$310 million annually for 30 years. Supporters: California Professional Firefighters; CA Assoc. of Veteran Service Agencies; National Alliance on Mental Illness - CA Opponents: Mental Health America of California; Howard Jarvis Taxpayers Association; CalVoices
<input type="radio"/> ROSE PENELOPE YEE Party Preference: Democratic Finance Businesswoman/Investor	
<input type="radio"/> MIKE DORAN Party Preference: Democratic School Board Member	
<input type="radio"/> DOUG LAMALFA Party Preference: Republican Farmer/United States Representative	
<input type="radio"/> Write-in	
STATE SENATOR	
State Senator District 1	
Vote for One	
<input type="radio"/> MEGAN DAHLE Party Preference: Republican Farmer/Businesswoman/Mother	<input type="radio"/> YES
	<input type="radio"/> NO
<input type="radio"/> DAVID FENNELL Party Preference: Republican Entrepreneur	SCHOOL
<input type="radio"/> Write-in	Measure B Sutter Union High School BOND 55%
MEMBER OF THE STATE ASSEMBLY	
State Assembly Member District 3	B To modernize the football stadium and athletic facilities; replace outdated continuation school classrooms, improve restrooms and school facilities; shall the Sutter Union High School District measure authorizing \$13,800,000 of bonds at legal rates be adopted, generating approximately \$840,000 annually as long as bonds are outstanding at a rate of approximately \$25 per \$100,000 assessed value, with annual audits, independent citizens' oversight, NO money for salaries and all money staying local?
<input type="radio"/> AARON DRAPER Party Preference: Democratic Professor/Photographer	
<input type="radio"/> JAMIE "JAMES" GALLAGHER Party Preference: Republican Assemblyman/Farmer/Businessman	
<input type="radio"/> Write-in	

SAMPLE BALLOT

SAMPLE BALLOT

VOTE BOTH SIDES OF BALLOT

51-SB4-LD





51-SB4-PA



OFFICIAL BALLOT
Presidential Primary Election
PEACE AND FREEDOM PARTY
Tuesday, March 5, 2024
County of Sutter



BT-4

INSTRUCTIONS TO VOTERS:

Completely fill in the oval to the left of your choice. Use a blue or black ink pen to mark your ballot. NO RED ink.

Only qualified write-in candidate votes will be counted. Write that person's name in the write-in space and fill in the oval.

If you make a mistake, clearly mark your intended choice and strikeout the mistake. If you would like a replacement ballot, contact our office or a poll worker.



Party-Nominated Offices
 Only voters registered as a member of the Peace and Freedom Party may vote in this primary election for President and party committee.

Voter-Nominated Offices
 All voters may vote in these contests. Candidates display a party preference (or None) for the information of voters. This is not a party endorsement or approval.

VOTER-NOMINATED OFFICES

PARTY-NOMINATED OFFICES

UNITED STATES SENATOR

PRESIDENT OF THE UNITED STATES

There are two U.S. Senate contests on this ballot.

- One for the regular 6-year term ending January 3, 2031
 - One for the remainder of the current term ending January 3, 2025
- You may vote for both contests.

Presidential Preference

Vote for One

CLAUDIA DE LA CRUZ

**United States Senator
(Full Term)**

Vote for One

CORNEL WEST

LAURA GARZA
 Party Preference: None
 Freight Railroad Worker

CHRISTINA PASCUCCI
 Party Preference: Democratic

JASMINE SHERMAN

SEPI GILANI
 Party Preference: Democratic
 Physician/Surgeon/Professor

DAVID PETERSON
 Party Preference: Democratic
 Small Business Owner

Write-in

DON J. GRUNDMANN
 Party Preference: None
 Doctor of Chiropractic

PERRY POUND
 Party Preference: Democratic
 Small Business Owner

FORREST JONES
 Party Preference: American Independent

KATIE PORTER
 Party Preference: Democratic
 U.S. Representative

BARBARA LEE
 Party Preference: Democratic
 Congresswoman/Mother

DOUGLAS H. PIERCE
 Party Preference: Democratic
 Missing Persons' Investigator

GAIL LIGHTFOOT
 Party Preference: Libertarian
 Retired Registered Nurse

RAJI RAB
 Party Preference: Democratic
 Aviator/Educator/Entrepreneur

SARAH SUN LIEW
 Party Preference: Republican
 Pastor/Nonprofit CEO

MARK RUZON
 Party Preference: None
 Software Engineer

SAMPLE BALLOT



<input type="radio"/> SHARLETA BASSETT Party Preference: Republican Businesswoman/Mother/Farmer	<input type="radio"/> JONATHAN REISS Party Preference: Republican
<input type="radio"/> JAMES BRADLEY Party Preference: Republican Chief Executive Officer	<input type="radio"/> JOHN ROSE Party Preference: Democratic Office Manager
<input type="radio"/> MARTIN VEPRAUSKAS Party Preference: Republican Retired Operations Manager	<input type="radio"/> HARMESH KUMAR Party Preference: Democratic Psychologist/Social Entrepreneur
<input type="radio"/> ERIC EARLY Party Preference: Republican Business Owner/Attorney	<input type="radio"/> JAMES "JIM" MACAULEY Party Preference: Republican Sales Associate
<input type="radio"/> ADAM B. SCHIFF Party Preference: Democratic United States Representative	<input type="radio"/> STEVE GARVEY Party Preference: Republican Professional Baseball Representative
<input type="radio"/> MAJOR SINGH Party Preference: None Software Engineer	<input type="radio"/> DENICE GARY-PANDOL Party Preference: Republican Retired Security Analyst
<input type="radio"/> STEFAN SIMCHOWITZ Party Preference: Republican Art Dealer	<input type="radio"/> _____ <small>Write-in</small>
United States Senator (Partial/Unexpired Term)	
Vote for One	
<input type="radio"/> BARBARA LEE Party Preference: Democratic Congresswoman/Mother	<input type="radio"/> KATIE PORTER Party Preference: Democratic U.S. Representative
<input type="radio"/> ERIC EARLY Party Preference: Republican Business Owner/Attorney	<input type="radio"/> STEVE GARVEY Party Preference: Republican Professional Baseball Representative
<input type="radio"/> ADAM B. SCHIFF Party Preference: Democratic United States Representative	<input type="radio"/> SEPI GILANI Party Preference: Democratic Physician/Surgeon/Professor
<input type="radio"/> CHRISTINA PASCUCCI Party Preference: Democratic	<input type="radio"/> _____ <small>Write-in</small>

SAMPLE BALLOT



51-SB4-PC

VOTER-NOMINATED OFFICES	MEASURES SUBMITTED TO THE VOTERS
UNITED STATES REPRESENTATIVE	STATE
United States Representative District 1 Vote for One	1 AUTHORIZES \$6.38 BILLION IN BONDS TO BUILD MENTAL HEALTH TREATMENT FACILITIES FOR THOSE WITH MENTAL HEALTH AND SUBSTANCE USE CHALLENGES; PROVIDES HOUSING FOR THE HOMELESS. LEGISLATIVE STATUTE. Amends Mental Health Services Act to provide additional behavioral health services. Fiscal Impact: Shift roughly \$140 million annually of existing tax revenue for mental health, drug, and alcohol treatment from counties to the state. Increased state bond repayment costs of \$310 million annually for 30 years. Supporters: California Professional Firefighters; CA Assoc. of Veteran Service Agencies; National Alliance on Mental Illness - CA Opponents: Mental Health America of California; Howard Jarvis Taxpayers Association; CalVoices
<input type="radio"/> ROSE PENELOPE YEE Party Preference: Democratic Finance Businesswoman/Investor	
<input type="radio"/> MIKE DORAN Party Preference: Democratic School Board Member	
<input type="radio"/> DOUG LAMALFA Party Preference: Republican Farmer/United States Representative <input type="radio"/> Write-in	
STATE SENATOR	
State Senator District 1 Vote for One	<input type="radio"/> YES <input type="radio"/> NO
<input type="radio"/> MEGAN DAHLE Party Preference: Republican Farmer/Businesswoman/Mother	
<input type="radio"/> DAVID FENNELL Party Preference: Republican Entrepreneur <input type="radio"/> Write-in	SCHOOL Measure B Sutter Union High School BOND 55%
MEMBER OF THE STATE ASSEMBLY	
State Assembly Member District 3 Vote for One	B To modernize the football stadium and athletic facilities; replace outdated continuation school classrooms, improve restrooms and school facilities; shall the Sutter Union High School District measure authorizing \$13,800,000 of bonds at legal rates be adopted, generating approximately \$840,000 annually as long as bonds are outstanding at a rate of approximately \$25 per \$100,000 assessed value, with annual audits, independent citizens' oversight, NO money for salaries and all money staying local?
<input type="radio"/> AARON DRAPER Party Preference: Democratic Professor/Photographer	
<input type="radio"/> JAMIE "JAMES" GALLAGHER Party Preference: Republican Assemblyman/Farmer/Businessman <input type="radio"/> Write-in	
	<input type="radio"/> BONDS YES <input type="radio"/> BONDS NO

SAMPLE BALLOT

SAMPLE BALLOT

VOTE BOTH SIDES OF BALLOT



51-SB4-PD



EXPLORE. EXPERIENCE. PARTICIPATE

**FREE
ADMISSION!**



Exhibits Include:

- The Nisenan
- Early Pioneer Days of Yuba-Sutter
- Agriculture Wing
- Multi-Cultural Gallery, with displays on Yuba-Sutter's history of:
 - Chinese Americans
 - Hmong Americans
 - Japanese Americans
 - Mexican Americans
 - Punjabi Americans
- 4-6 temporary exhibits per year

Our Gift Shop features books on local history and many unique and handcrafted items made in California.

1333 Butte House Road, Yuba City, CA 95993

530.822.7141

For hours and information on exhibits, events,
and more, visit:

www.suttercountymuseum.org



DID YOU KNOW?

You can track your ballot from when it is in the mail to you, and when it is received in the Elections Office, to when it is counted?

Follow these 4 easy steps to track your mail ballot every step of the way:

Step 1:

Go to <https://california.ballottrax.net/voter/>.

Step 2:

On the Get Started page, enter your required personal information, click on: Register/Log In

Step 3:

On the Contact Preference page, scroll down and select how you would like to receive your notifications.

- Email, Text and/or Voice Call
- Notification Hours
- Language

After making your selections, click on CONFIRM

Step 4:

Follow the instructions after you confirm to make sure you receive your notifications.

Tracking your mail ballot – when it is mailed, received, and counted – has never been easier!

OR:



You can sign up with the USPS for Informed Delivery to digitally preview all of your mail and manage all of your packages scheduled to arrive! You will receive an email notification that allows you to view greyscale images of the exterior, address side of letter-size mail pieces. To get Informed Delivery by USPS:

Step 1:

Create your Account by going to <https://informedelivery.usps.com>

Step 2:

Verify your Identity: Protect your privacy and personal information by verifying your identity and address.

Step 3:

Receive notifications: View notifications from any smartphone, tablet or computer.





An important message from the Sutter County Registrar of Voters For the March 5, 2024 Presidential Primary Election

All Eligible Voters Will Be Mailed a Ballot

All eligible registered voters in Sutter County will receive a ballot by mail for the March 5, 2024 Presidential Primary Election. However, Sutter County will be utilizing polling places this election on Election Day where you can request a ballot or drop off your voted ballot.

Polling Place Hours: Election Day, March 5, 2024; 7 a.m. to 8 p.m.

- ✓ AK School- 1700 Camino De Flores, Yuba City, CA 95993
- ✓ East Nicolaus Fire Department- 1988 Nicolaus Ave, Nicolaus, CA 95659
- ✓ Franklin Elementary School- 332 N Township Rd, Yuba City, CA 95993
- ✓ Live Oak Community Building- 10200 O Street, Live Oak, CA 95953
- ✓ Pleasant Grove Fire Department- 3100 Howsley Road, Pleasant Grove, CA 95668
- ✓ Riverbend Elementary School- 301 Stewart Rd, Yuba City, CA 95991
- ✓ St Andrew Presbyterian Church- 1390 Franklin Rd, Yuba City, CA 95993
- ✓ Sutter County Elections- 1435 Veterans Memorial Circle, Yuba City, CA 95993
- ✓ Sutter Union High School- 2665 Acacia Avenue, Sutter, CA 95982
- ✓ Tierra Buena School- 1794 Villa Ave, Yuba City, CA 95993
- ✓ United Pentecostal Church- 2649 E Onstott Rd, Yuba City, CA 95991
- ✓ Veterans Center- 1425 Veterans Memorial Circle, Yuba City, CA 95993
- ✓ Walnut Avenue Community Center- 1431 Walnut Ave, Yuba City, CA 95993
- ✓ Yuba-Sutter Fairgrounds (Flower House)- 442 Franklin Ave, Yuba City, CA 95991

Drop Box Locations:

Exterior (Available 24 hours):

- ✓ Sutter County Elections, 1435 Veterans Memorial Circle, Yuba City, CA 95953
- ✓ Sutter County Clerk Recorder, 433 Second Street, Yuba City, CA 95991
- ✓ Sutter County Fire Station, 2340 California Street, Sutter, CA 95982
- ✓ Live Oak City Hall, 9955 Live Oak Boulevard, Live Oak, CA 95953
- ✓ Pleasant Grove Fire Department, 3100 Howsley Road, Pleasant Grove, CA 95668

Contact Us:

Website: www.suttercounty.org

Email: elections@co.sutter.ca.us

Phone: (530) 822-7122

Accessibility: 1-800-TDD-VOTE. Disability Rights California will also be operating a statewide Voting Hotline on Election Day: 1-888-569-7955

Visit Secretary of State's Website: www.sos.ca.gov for information on State and Federal Candidates.

