

SUTTER

COUNTY OF



PRESIDENTIAL PRIMARY ELECTION

TUESDAY, MARCH 5, 2024

Voter Information Pamphlet



Compiled and Distributed by Sutter County Elections

1435 Veterans Memorial Circle
Yuba City, CA 95993
Office: 530-822-7122 Fax: 530-822-7587
www.suttercounty.org/elections
<http://twitter.com/suttervote>

SIMPLE – SAFE – SECURE

You will also be able to track your mail ballot every step of the way!

You will know when it is mailed, received, and counted by the Registrar of Voters. All you need to do is sign up for Where's My Ballot? at wheresmyballot.sos.ca.gov

Tuesday, March 5 - Polls Open at 7 a.m. & Close at 8 p.m.



C02



Voting Instructions – paper ballot



Mark your ballot

Use a pen with blue or black ink to fill in the oval to the left of the candidate's name you wish to vote for. Do not use red ink, pencil, or Sharpie.



To mark your choice, fill in the oval completely.

Voting for more than allowed for a contest will be an over vote and no votes for that contest will be counted. The rest of the ballot will count.

Do not sign your name, write your initials, or write any other words/marks on your voted ballot.



To vote for a **qualified** write-in candidate, write their name in the blank space at the end of the list of candidates. A list of qualified write-in candidates is available by phone, at polling places, or online at www.suttercounty.org/elections.

Check your ballot carefully

Made a mistake? To get a replacement, you can:



Email your request to elections@co.sutter.ca.us, or:



Request a replacement ballot by phone - call 530-822-7122, or:



Visit the Elections office at 1435 Veterans Memorial Circle, Yuba City.

Cast your ballot

Place your voted ballot inside the blue return envelope. Sign your name, write your residence address in the spaces provided, and seal.

Return it by:



Mailing your ballot so that it is postmarked by Election Day, or:



Dropping your ballot at any secure Ballot Drop Box, or:



Visiting any Polling Place on Election Day before 8:00 pm.

Vote in person

To vote a ballot at the polls, visit your polling place [noted on your Vote by Mail envelope](#) located under your name and request a ballot from the pollworker.





How to vote in a Presidential Primary Election

Voting for President depends on the party you are registered with. If you are not registered with a qualified political party, and you do not request a party ballot, your ballot will NOT contain the office of President.

The primary election in March chooses the candidates who will run in the General Election in November. You may see three different types of primaries on your ballot. The way each primary works depends on the office.

 <p>Presidential Nominated by party</p>	 <p>California Top-Two Primary Nominated by voters</p>	 <p>Local Nonpartisan candidates</p>
---	--	--

Who can vote in each type of primary election in 2024?

<p>Only voters who registered in the same political party as the candidate can vote for these offices.</p> <p>The following parties allow voters who registered with no party preference to vote in their presidential primary.</p> <ul style="list-style-type: none"> American Independent Democratic Libertarian 	<p>All voters can vote for any candidate running for these offices. All candidates from all parties appear on the ballot for these offices.</p>	<p>All voters can vote for any candidate running for these offices.</p>
---	--	--

Which offices are in each type of primary?

<p>The candidates' party always appears on the ballot</p>	<p>The candidates' party preference (or "None") always appears on the ballot.</p>	<p>The candidates' party preference never appears on the ballot</p>
<p>U.S. President Parties may also elect candidates for County Central Committees.</p>	<p>U.S. Senator U.S. Representative State Senator State Assembly Member</p>	<p>Superior Court Judges County Supervisors</p>

What is the result of each type of primary election?

<p>The winner of each political party's Presidential primary will represent that party in the General Election.</p>	<p>The top two candidates with the most votes move on to the General Election.</p> <p>They may have the same party preference.</p>	<p>Candidates who receive at least 50% plus 1 vote are elected.</p> <p>Or, if no candidate wins, the two candidates with the most votes move on to the General Election.</p>
--	---	--





Party Endorsements

Proposition 14, approved by the voters in 2010, authorizes political parties to endorse candidates to Voter-Nominated offices. This pamphlet contains the official endorsements that were received by the deadline.

The following parties endorse the following candidate(s):

AMERICAN INDEPENDENT PARTY

<u>Office</u>	<u>Party Preference</u>	<u>Candidate Name</u>
Congressional District 1	Republican	Doug LaMalfa
US Senate	Republican	James Bradley
State Senate District 1	Republican	David Fennell
State Assembly District 3	Republican	Jamie "James" Gallagher

DEMOCRATIC PARTY

<u>Office</u>	<u>Party Preference</u>	<u>Candidate Name</u>
Congressional District 1	Democratic	Rose Penelope Yee

REPUBLICAN PARTY

<u>Office</u>	<u>Party Preference</u>	<u>Candidate Name</u>
Congressional District 1	Republican	Doug LaMalfa
Assembly District 3	Republican	Jamie "James" Gallagher

U.S. Senate Information

There are two U.S. Senate contests on the March 5, 2024, Presidential Primary Election ballot.

The first contest is the regular election for the full 6-year term ending January 3, 2031.

The second contest is a special vacancy election (the current officeholder is temporarily filling a vacancy) for the remainder of the current term ending January 3, 2025.

You may vote for both contests.

Statement Information

The following pages contain voter information applicable to your ballot which may include any or all of the following:

- Candidate's Statements
- Ballot Measure, Analyses, Arguments and Rebuttals

A complete list of candidates appears on the Sample Ballot. Each Candidate's statement is volunteered by the candidate and is printed at their expense unless otherwise determined. The text, grammar and spelling are as submitted. All candidates may not have submitted statements.



**STATEMENT OF CANDIDATE FOR
UNITED STATES REPRESENTATIVE, DISTRICT 1**

DOUG LAMALFA

Occupation: Farmer, Member of the United States House of Representatives

Education and Qualifications:The last several years have been difficult for too many. Inflation has taken a bite out of family budgets, gas and energy prices have soared, crime and lawlessness have crept into our rural communities. The challenges we face in Northern California just keep growing.

Bloated federal budgets fuel inflation and add to the national debt. As your representative in Congress, I voted for the Bi-Partisan Fiscal Responsibility Act to limit spending and save taxpayers \$2.1 trillion by cutting waste.

I continue to work to improve disaster recovery, including passing tax relief for the victims of wildfires. Increasing water supplies and protecting our water from being wasted by government mismanagement is critical. I have been able to deliver \$3.8 billion in low interest loans and grants for Sites Reservoir planning and construction.

Mass illegal immigration, cartel marijuana grows, the menace of fentanyl, tragic human trafficking are symptoms of the current Administration's refusal to control the border. I've voted to strengthen and defend the border. We must finally complete the wall, it's essential to our national security.

I have consistently worked to bring energy prices down and make America energy independent by increasing domestic oil and natural gas production as well as renewables such as biomass power and clean, cheap hydroelectric.

I will always fight to protect our Constitution and our individual rights. It's my privilege to serve you in Congress, to be your voice. I'd be honored to receive your vote. Thank you. www.DougLaMalfa.com or call 530-712-3675.

s/ Doug Lamalfa

EACH CANDIDATE'S STATEMENT OF QUALIFICATIONS IS PRINTED EXACTLY AS SUBMITTED BY THE CANDIDATE.



**STATEMENT OF CANDIDATE FOR
UNITED STATES REPRESENTATIVE, DISTRICT 1**

ROSE PENELOPE YEE

Occupation: Business Leader, Finance Professional, Investor

Education and Qualifications: Like you, I'm a proud American.

I have a vision for America: a nation where we live the very best possible lives we can live, where everyone has the opportunity to achieve the American dream. But for many, the American dream seems so far out of reach. The struggle to make ends meet and keep ones head above water is real.

As such, I will focus on uplifting Americans' financial wellbeing. Parents should earn wages for a full day's work enough to feed, clothe, and house their families without needing a second or third job to do it.

I will work towards an America that works for all Americans: Healthcare for Americans: Quality healthcare through Medicare for All. Education for Americans: Adequately fund our schools and give youth access to trade schools, public colleges, and universities without crippling student loans. Security for Americans: Protect our seniors by preserving and expanding Social Security, uphold workers' rights, and create a Federal Jobs Guaranty to provide Economic Security for all.

Safety for Americans: Ensure a healthy and safe environment that promotes our well-being.
Care for Americans: An economy where budgets and laws passed put the welfare of Americans first, rather than the profiteering of billionaires.

I'm inviting you to join me on this journey. With your vote, we can realize our shared vision of a kinder, gentler America with thriving communities and caring neighborhoods.

It will be an honor to get your vote and serve you in Congress.

Thank you.

www.roseforcongress.com

s/ Rose Penelope Yee

**DECLARACIÓN DE CANDIDATA A
REPRESENTANTE DE ESTADOS UNIDOS, DISTRITO 1**

ROSE PENELOPE YEE

Occupación: Líder Empresarial, Profesional Financiera, Inversorista

Educación y calificaciones: Como usted, soy una orgullosa estadounidense.

Tengo una visión para Estados Unidos: una nación en la que vivamos lo mejor posible, en la que todo el mundo tenga la oportunidad de alcanzar el sueño Americano.

Pero, para muchos, el sueño Americano parece estar muy lejos de su alcance. La lucha por llegar al fin de mes y mantener la cabeza fuera del agua es real.

Como tal, me centraré en mejorar el bienestar financiero de los estadounidenses. Los padres de familia deben ganar sueldos por un día completo de trabajo suficientes para alimentar, vestir y proporcionar vivienda a sus familias sin la necesidad de un segundo o tercer empleo para hacerlo.

Trabajaré por unos Estados Unidos que funcionen para todos los estadounidenses: Atención médica para los estadounidenses: Atención médica de calidad a través de Medicare para Todos.
Educación para los estadounidenses: Financiar adecuadamente nuestras escuelas y dar a los jóvenes acceso a escuelas de oficios, universidades públicas, y universidades sin abrumadores préstamos estudiantiles.

Seguridad para los estadounidenses: Proteger a nuestros adultos mayores preservando y ampliando el Seguro Social, defender los derechos de los trabajadores, y crear una Garantía Federal de Empleo para proporcionar Seguridad Económica a todos.
Seguridad para los estadounidenses: Garantizar un entorno saludable y seguro que promueva nuestro bienestar.

Atención para los estadounidenses: Una economía en la que los presupuestos y las leyes aprobados pongan el bienestar de los estadounidenses en primer lugar, en lugar de la especulación de los multimillonarios.

Lo invito a unirse a mí en este viaje. Con su voto, podemos hacer realidad nuestra visión compartida de unos Estados Unidos más amables y apacibles, con comunidades prósperas y vecindarios solidarios.

Será un honor obtener su voto y servirle en el Congreso.

Gracias.

www.roseforcongress.com

f/ Rose Penelope Yee



**STATEMENT OF CANDIDATE FOR
STATE SENATE, DISTRICT 1**

MEGAN DAHLE

Occupation: Farmer/Businesswoman/Mother

Education and Qualifications: As an Assemblywoman, I have championed the issues of the North State in Sacramento and have successfully secured tens of millions of dollars for our communities.

There is more work to be done.

California's high cost of living is forcing families to decide between buying groceries or putting gas in their cars. By voting to suspend the state's 54 cent/gallon gas tax, I fought to save consumers over \$1,600 a year and make it less expensive for farms and manufacturers to get products to market.

Families can't afford higher taxes and increased healthcare costs. That's why I have repeatedly opposed efforts to raise our gas, sales, property and other taxes – while working to reduce healthcare costs.

Crime is out of control and we need criminals off our streets.

I have pushed legislation to crack down on smash-and-grab robberies, co-authored a law to more severely punish human traffickers and backed measures to more effectively prosecute fentanyl dealers.

To reduce homelessness, I've supported legislation that addresses mental health and addiction issues that are often a root cause.

By working to improve forestry management, properly maintain power lines and make fire insurance more affordable, I am fighting to protect homes from wildfires.

The California Professional Firefighters support my re-election. Please join them and my campaign to get California back on track.

Please visit www.votemegandahle.com to learn more about my values.

I'd be honored to have your vote.

s/ Megan Dahle

**STATEMENT OF CANDIDATE FOR
STATE SENATE, DISTRICT 1**

DAVID FENNELL

Occupation: Entrepreneur

Education and Qualifications: My name is David Fennell and I am running to be your State Senator. We have been through a lot together in Northern California with rising costs, increased crime, decreased water, fire outbreaks & economic uncertainty. Our great region is constantly being outvoted by more populated Los Angeles who doesn't understand our problems or share our values.

Why are violent criminals allowed to rob at will?

Why are we releasing water farmers need into the ocean?

Why are forests mismanaged, resulting in historic burns?

Why are bureaucrats being allowed to destroy business & innovation?

Why are the values of our Northern California families under assault?

The answer is we have a lack of leadership in Sacramento.

Newly redrawn Senate District 1 calls for new leadership! I have a college degree & 30+ years of real-world business experience & will bring practical solutions to Sacramento. Our region is the most beautiful! While others leave California, I visited all our counties. 60+ campaign stops. Time to elect a fighter! Will you join me in the fight to save our State?

I will not let you down!

Vote David Fennell for State Senate!

www.fennellforsenate.com

s/ David Fennell



**STATEMENT OF CANDIDATE FOR
BOARD OF SUPERVISORS, DISTRICT 1**

JEFF BOONE

Occupation: Farmer, Businessman

Education and Qualifications: Actions speak louder than words.

Do you feel your voice is being heard? Do you feel well represented at the County level? A lifelong District 1 resident, as your Supervisor, I will focus on quality-of-life issues, maintaining roadways, making meaningful improvements to the homeless crisis, and promoting economic development.

We must find funding solutions to support Sutter County Fire Departments. The compensation for law enforcement and fire professionals should pace one another; those salaries are grossly unbalanced.

As a businessman, I have a clear understanding of what it means to maintain a healthy budget, but more importantly, the experience of signing both sides of a check.

A third-generation farmer and son of Keith and Dorothy Boone, I currently grow peaches and walnuts in Sutter County. Additionally, I'm an almond and walnut broker, a graduate of the California Ag Leadership Foundation, have served as State Delegate Chairman for the California Canning Peach Association, Past President of the Live Oak Lions Club and served as Past President/Member of the Live Oak Little League Board for 25 years.

I'm ready to roll up my sleeves and get to work doing what matters most to you. I will attend meetings. I will be accessible. Your voice will be heard.

I humbly ask for your vote on March 5th. Thank you!

530-701-3000

www.supervisorboone.com

s/ Jeff Boone

**DECLARACIÓN DE CANDIDATO A LA
JUNTA DE SUPERVISORES, DISTRITO 1**

JEFF BOONE

Ocupación: Agricultor, Empresario

Educación y calificaciones: Las acciones dicen más que las palabras.

¿Siente que su voz está siendo escuchada? ¿Se siente bien representado a nivel del Condado? Residente de toda la vida en el Distrito 1, como su Supervisor me centraré en los problemas relacionados con la calidad de vida, el mantenimiento de las vialidades, la implementación de mejoras significativas para la crisis de las personas sin hogar, y la promoción del desarrollo económico.

Debemos encontrar soluciones de financiación para apoyar a los Departamentos de Bomberos del Condado de Sutter. Las compensaciones de los profesionales de las fuerzas del orden público y de los bomberos deberían ir a la par; esos salarios están muy desequilibrados.

Como empresario, tengo una clara comprensión de lo que significa mantener un presupuesto sano, pero lo que es más importante, la experiencia de firmar ambos lados de un cheque.

Agricultor de tercera generación e hijo de Keith y Dorothy Boone, actualmente cultivo duraznos y nueces en el Condado de Sutter. Además, soy corredor de almendras y nueces, graduado de la Fundación de Liderazgo Ag de California, he fungido como Presidente Delegado Estatal de la California Canning Peach Association, Antiguo Presidente del Club de Leones Live Oak y fungido como Antiguo Presidente/Miembro de la Junta de la Live Oak Little League durante 25 años.

Estoy listo para subirme las mangas y ponerme a trabajar haciendo lo que más le importa a usted. Asistiré a las reuniones. Seré accesible. Su voz será escuchada.

Le pido humildemente su voto el 5 de marzo. ¡Gracias!

530-701-3000

www.supervisorboone.com

f/ Jeff Boone



**ਬੋਰਡ ਔਫ਼ ਸੁਪਰਵਾਈਜ਼ਰ, ਜ਼ਿਲ੍ਹਾ 1
ਲਈ ਉਮੀਦਵਾਰ ਦਾ ਬਿਆਨ**

JEFF BOONE

ਪੇਸ਼ਾ: ਕਿਸਾਨ, ਕਾਰੋਬਾਰੀ

ਸਿੱਖਿਆ ਅਤੇ ਯੋਗਤਾਵਾਂ: ਕਾਰਵਾਈਆਂ ਸ਼ਬਦਾਂ ਨਾਲੋਂ ਜ਼ਿਆਦਾ ਉੱਚ ਬੋਲਦੀਆਂ ਹਨ।

ਕੀ ਤੁਹਾਨੂੰ ਲੱਗਦਾ ਹੈ ਕਿ ਤੁਹਾਡੀ ਗੱਲ ਸੁਣੀ ਜਾ ਰਹੀ ਹੈ? ਕੀ ਤੁਹਾਨੂੰ ਲੱਗਦਾ ਹੈ ਕਿ ਕਾਉਂਟੀ ਪੱਧਰ 'ਤੇ ਤੁਹਾਡੀ ਨੁਮਾਇੰਦਗੀ ਚੰਗੀ ਤਰ੍ਹਾਂ ਕੀਤੀ ਜਾ ਰਹੀ ਹੈ?

ਜੀਵਨ ਭਰ ਜ਼ਿਲ੍ਹਾ 1 ਦਾ ਨਿਵਾਸੀ, ਤੁਹਾਡੇ ਸੁਪਰਵਾਈਜ਼ਰ ਦੇ ਤੌਰ 'ਤੇ, ਮੈਂ ਜੀਵਨ ਦੀ ਗਣਤੰਤਰ ਦੇ ਮੁੱਦਿਆਂ 'ਤੇ ਵਿਆਨ ਕੇਂਦਰਿਤ ਕਰਾਂਗਾ, ਸੜਕ ਮਾਰਗਾਂ ਦਾ ਸੁਰੱਖਿਅਤ ਕਰਾਂਗਾ, ਬੇਘਰਪਣੇ ਦੇ ਸੰਕਟ ਲਈ ਅਰਥਪੂਰਨ ਸੁਧਾਰ ਕਰਾਂਗਾ, ਅਤੇ ਆਰਥਿਕ ਵਿਕਾਸ ਨੂੰ ਹੱਲਸ਼ੇਰੀ ਦਿਆਂਗਾ।

ਸਾਡੇ ਲਈ Sutter ਕਾਉਂਟੀ ਦੇ ਅੱਗ ਬੁਝਾਉਣ ਵਾਲੇ ਵਿਭਾਗਾਂ ਦੀ ਸਹਾਇਤਾ ਲਈ ਫੰਡਿੰਗ ਦੇ ਹੱਲ ਲੱਭਣੇ ਲਾਜ਼ਮੀ ਹਨ। ਕਾਨੂੰਨ ਲਾਗੂ ਕਰਨ ਵਾਲੇ ਅਤੇ ਅੱਗ ਬੁਝਾਉਣ ਵਾਲੇ ਵਿਭਾਗ ਦੇ ਪੇਸ਼ੇਵਰਾਂ ਲਈ ਮੁਆਵਜ਼ਾ ਇੱਕ ਦੂਜੇ ਦੇ ਸਮਾਨ ਹੋਣੇ ਚਾਹੀਦੇ ਹਨ; ਲੇਕਿਨ ਉਨ੍ਹਾਂ ਨਾਜ਼ਾਫ਼ਾ ਵਿੱਚ ਕਾਫ਼ੀ ਹੱਦ ਤੱਕ ਆਸੁਲਨ ਹੈ।

ਇੱਕ ਕਾਰੋਬਾਰੀ ਹੋਣ ਦੇ ਨਾਤੇ, ਮੈਨੂੰ ਇੱਕ ਸੰਤੁਲਿਤ ਬਜਟ ਨੂੰ ਬਣਾਈ ਰੱਖਣ ਦਾ ਕੀ ਮਤਲਬ ਹੈ, ਇਸ ਬਾਰੇ ਕਾਫ਼ੀ ਚੰਗੀ ਸਮਝ ਹੈ ਪਰ ਇਸ ਤੋਂ ਵੀ ਮਹੱਤਵਪੂਰਨ ਗੱਲ ਇਹ ਹੈ ਕਿ, ਮੈਨੂੰ ਇੱਕ ਚੌਕ ਦੇ ਟੋਵਰਾਂ ਪਾਸਿਆਂ 'ਤੇ ਦਾਸਤਖ਼ਤ ਕਰਨ ਦਾ ਤਜਰਬਾ ਵੀ ਹੈ।

ਇੱਕ ਤੀਜੀ ਪੀੜ੍ਹੀ ਦਾ ਕਿਸਾਨ ਅਤੇ Keith ਅਤੇ Dorothy Boone ਦਾ ਪੁੱਤਰ, ਮੈਂ ਇਸ ਸਮੇਂ Sutter ਕਾਉਂਟੀ ਵਿੱਚ ਆਠ ਅਕਰੋਟ ਉਗਾਉਂਦਾ ਹਾਂ। ਇਸ ਤੋਂ ਇਲਾਵਾ, ਮੈਂ ਇੱਕ ਬਦਾਮ ਅਤੇ ਅਘੋਟ ਦਾ ਦਲਾਲ ਹਾਂ, ਮੈਂ ਕੈਲੀਫੋਰਨੀਆ ਐਗਰੀਕਲਚਰ ਐਡਵੋਕੇਟਸ ਆਫ਼ ਕੈਲੀਫੋਰਨੀਆ ਫ੍ਰੀਟਰੀਜ਼ ਆਫ਼ ਕੈਲੀਫੋਰਨੀਆ Canning Peach Association ਲਈ ਸਟੇਟ ਡੈਲੀਗੇਟ ਚੋਣਮੈਨ, Live Oak ਲਾਇਨਜ਼ ਕਲੱਬ ਦਾ ਸਾਬਕਾ ਪ੍ਰਧਾਨ ਹਾਂ ਅਤੇ ਮੈਂ 25 ਸਾਲਾਂ ਲਈ Live Oak ਲਿਟਲ ਲੀਗ ਬੋਰਡ ਦੇ ਸਾਬਕਾ ਪ੍ਰਧਾਨ/ਮੈਂਬਰ ਵਜੋਂ ਸੇਵਾ ਕੀਤੀ ਹੈ।

ਮੈਂ ਕੜੀ ਮਿਹਨਤ ਕਰਨ ਅਤੇ ਉਹ ਕੰਮ ਕਰਨ ਲਈ ਤਿਆਰ ਹਾਂ ਜੋ ਤੁਹਾਡੇ ਲਈ ਸਭ ਤੋਂ ਮਹੱਤਵਪੂਰਨ ਹੈ। ਮੈਂ ਮੀਟਿੰਗਾਂ ਵਿੱਚ ਹਾਜ਼ਰਾ ਹੋਵਾਂਗਾ। ਮੈਂ ਤੁਹਾਡੀ ਪਹੁੰਚ ਵਿੱਚ ਰਹਾਂਗਾ। ਤੁਹਾਡੀ ਆਵਾਜ਼ ਨੂੰ ਸੁਣਿਆ ਜਾਵੇਗਾ।

ਮੈਂ 5 ਮਾਰਚ ਨੂੰ ਨਿਮਰਤਾ ਨਾਲ ਤੁਹਾਡੀ ਵੋਟ ਦੀ ਮੰਗ ਕਰਦਾ ਹਾਂ। ਧੰਨਵਾਦ!

530-701-3000

www.supervisorboone.com

s/ Jeff Boone

**STATEMENT OF CANDIDATE FOR
BOARD OF SUPERVISORS, DISTRICT 1**

NICK MICHELI

Occupation: County Supervisor/Farmer

Education and Qualifications: As a 3rd generation farmer and business owner, I understand first-hand the burdens our residents face from government overreach. For the last four years, I have had the opportunity to serve as your District 1 Sutter County Supervisor. When I first ran, I had four major priorities:

Opposing salary hikes for Supervisors, until we get our fiscal house in order.

Making smart cuts in the County budget to save money for all taxpayers. We've managed to trim over \$600,000 in annual county spending!

Stepping up public safety by utilizing the saved funds to support our Sheriff and Fire departments. We've given our Sheriff Deputies and Firefighters well-deserved raises, stabilizing those departments and ensuring our first responders stay here in Sutter County.

Repair our rural county roads. I've worked tirelessly with local residents and County staff to help pave over 100 miles of County roads within my district alone!

And I can proudly say, "Promises made, Promises kept!"

My focus has always been to keep Sutter County safe, affordable and ensure our farming community prospers well into the future.

I would be honored to receive your vote. Thank you!

www.NickMicheli.com or call (530)635-1372

s/ Nick Micheli





51-SB2-DA



OFFICIAL BALLOT
Presidential Primary Election
DEMOCRATIC PARTY
Tuesday, March 5, 2024
County of Sutter



BT-2

INSTRUCTIONS TO VOTERS:

Completely fill in the oval to the left of your choice. Use a blue or black ink pen to mark your ballot. NO RED ink.

Only qualified write-in candidate votes will be counted. Write that person's name in the write-in space and fill in the oval.

If you make a mistake, clearly mark your intended choice and strikeout the mistake. If you would like a replacement ballot, contact our office or a poll worker.



Party-Nominated Offices
 Voters registered as a member of the Democratic Party may vote in this primary election for President and party committee. Some parties may allow voters with no party preference to vote in the party's primary election for President.

Voter-Nominated Offices
 All voters may vote in these contests. Candidates display a party preference (or None) for the information of voters. This is not a party endorsement or approval.

VOTER-NOMINATED OFFICES

UNITED STATES SENATOR

PARTY-NOMINATED OFFICES

PRESIDENT OF THE UNITED STATES

Presidential Preference

Vote for One

GABRIEL CORNEJO

PRESIDENT R BODDIE

JOSEPH R BIDEN JR

MARIANNE WILLIAMSON

DEAN PHILLIPS

ARMANDO "MANDO" PEREZ-SERRATO

STEPHEN P LYONS

There are two U.S. Senate contests on this ballot.

- One for the regular 6-year term ending January 3, 2031
 - One for the remainder of the current term ending January 3, 2025
- You may vote for both contests.

**United States Senator
(Full Term)**

Vote for One

LAURA GARZA
 Party Preference: None
 Freight Railroad Worker

SEPI GILANI
 Party Preference: Democratic
 Physician/Surgeon/Professor

DON J. GRUNDMANN
 Party Preference: None
 Doctor of Chiropractic

FORREST JONES
 Party Preference: American Independent

BARBARA LEE
 Party Preference: Democratic
 Congresswoman/Mother

GAIL LIGHTFOOT
 Party Preference: Libertarian
 Retired Registered Nurse

SARAH SUN LIEW
 Party Preference: Republican
 Pastor/Nonprofit CEO

CHRISTINA PASCUCCI
 Party Preference: Democratic

DAVID PETERSON
 Party Preference: Democratic
 Small Business Owner

PERRY POUND
 Party Preference: Democratic
 Small Business Owner

KATIE PORTER
 Party Preference: Democratic
 U.S. Representative

DOUGLAS H. PIERCE
 Party Preference: Democratic
 Missing Persons' Investigator

RAJI RAB
 Party Preference: Democratic
 Aviator/Educator/Entrepreneur

MARK RUZON
 Party Preference: None
 Software Engineer

SAMPLE BALLOT

<input type="radio"/> EBAN CAMBRIDGE
<input type="radio"/>
Write-in

<input type="radio"/> SHARLETA BASSETT Party Preference: Republican Businesswoman/Mother/Farmer	<input type="radio"/> JONATHAN REISS Party Preference: Republican
<input type="radio"/> JAMES BRADLEY Party Preference: Republican Chief Executive Officer	<input type="radio"/> JOHN ROSE Party Preference: Democratic Office Manager
<input type="radio"/> MARTIN VEPRAUSKAS Party Preference: Republican Retired Operations Manager	<input type="radio"/> HARMESH KUMAR Party Preference: Democratic Psychologist/Social Entrepreneur
<input type="radio"/> ERIC EARLY Party Preference: Republican Business Owner/Attorney	<input type="radio"/> JAMES "JIM" MACAULEY Party Preference: Republican Sales Associate
<input type="radio"/> ADAM B. SCHIFF Party Preference: Democratic United States Representative	<input type="radio"/> STEVE GARVEY Party Preference: Republican Professional Baseball Representative
<input type="radio"/> MAJOR SINGH Party Preference: None Software Engineer	<input type="radio"/> DENICE GARY-PANDOL Party Preference: Republican Retired Security Analyst
<input type="radio"/> STEFAN SIMCHOWITZ Party Preference: Republican Art Dealer	<input type="radio"/>
United States Senator (Partial/Unexpired Term)	
Vote for One	
<input type="radio"/> BARBARA LEE Party Preference: Democratic Congresswoman/Mother	<input type="radio"/> KATIE PORTER Party Preference: Democratic U.S. Representative
<input type="radio"/> ERIC EARLY Party Preference: Republican Business Owner/Attorney	<input type="radio"/> STEVE GARVEY Party Preference: Republican Professional Baseball Representative
<input type="radio"/> ADAM B. SCHIFF Party Preference: Democratic United States Representative	<input type="radio"/> SEPI GILANI Party Preference: Democratic Physician/Surgeon/Professor
<input type="radio"/> CHRISTINA PASCUCCI Party Preference: Democratic	<input type="radio"/>
	Write-in

SAMPLE BALLOT

51-SB2-DB



VOTE BOTH SIDES OF BALLOT



51-SB2-DC

VOTER-NOMINATED OFFICES	MEASURES SUBMITTED TO THE VOTERS
UNITED STATES REPRESENTATIVE	STATE
United States Representative District 1	1 AUTHORIZES \$6.38 BILLION IN BONDS TO BUILD MENTAL HEALTH TREATMENT FACILITIES FOR THOSE WITH MENTAL HEALTH AND SUBSTANCE USE CHALLENGES; PROVIDES HOUSING FOR THE HOMELESS. LEGISLATIVE STATUTE. Amends Mental Health Services Act to provide additional behavioral health services. Fiscal Impact: Shift roughly \$140 million annually of existing tax revenue for mental health, drug, and alcohol treatment from counties to the state. Increased state bond repayment costs of \$310 million annually for 30 years. Supporters: California Professional Firefighters; CA Assoc. of Veteran Service Agencies; National Alliance on Mental Illness - CA Opponents: Mental Health America of California; Howard Jarvis Taxpayers Association; CalVoices
Vote for One	
<input type="radio"/> ROSE PENELOPE YEE Party Preference: Democratic Finance Businesswoman/Investor	
<input type="radio"/> MIKE DORAN Party Preference: Democratic School Board Member	
<input type="radio"/> DOUG LAMALFA Party Preference: Republican Farmer/United States Representative	
<input type="radio"/> Write-in	
STATE SENATOR	
State Senator District 1	
Vote for One	
<input type="radio"/> MEGAN DAHLE Party Preference: Republican Farmer/Businesswoman/Mother	<input type="radio"/> YES
<input type="radio"/> DAVID FENNELL Party Preference: Republican Entrepreneur	<input type="radio"/> NO
<input type="radio"/> Write-in	
MEMBER OF THE STATE ASSEMBLY	
State Assembly Member District 3	
Vote for One	
<input type="radio"/> AARON DRAPER Party Preference: Democratic Professor/Photographer	
<input type="radio"/> JAMIE "JAMES" GALLAGHER Party Preference: Republican Assemblyman/Farmer/Businessman	
<input type="radio"/> Write-in	
Nonpartisan Offices	
All voters may vote in these contests. Candidates for these offices do not display a party preference.	

SAMPLE BALLOT

NONPARTISAN OFFICES	
COUNTY	
Supervisor - District 1	
Vote for One	
<input type="radio"/>	JEFF BOONE Farmer/Businessman
<input type="radio"/>	NICHOLAS MICHELI County Supervisor/Farmer
<input type="radio"/>	_____
	Write-in

51-SB2-DD



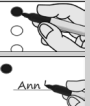


VOTE BOTH SIDES OF BALLOT

SAMPLE BALLOT



51-SB2-RA

 OFFICIAL BALLOT Republican Primary Election REPUBLICAN PARTY Tuesday, March 5, 2024 County of Sutter 		
INSTRUCTIONS TO VOTERS: Completely fill in the oval to the left of your choice. Use a blue or black ink pen to mark your ballot. NO RED ink. Only qualified write-in candidate votes will be counted. Write that person's name in the write-in space and fill in the oval. If you make a mistake, clearly mark your intended choice and strikeout the mistake. If you would like a replacement ballot, contact our office or a poll worker.		
Party-Nominated Offices Only voters registered as a member of the Republican Party may vote in this primary election for President and party committee.	Voter-Nominated Offices All voters may vote in these contests. Candidates display a party preference (or None) for the information of voters. This is not a party endorsement or approval.	
VOTER-NOMINATED OFFICES		
PARTY-NOMINATED OFFICES		
UNITED STATES SENATOR		
PRESIDENT OF THE UNITED STATES		
Presidential Preference Vote for One		There are two U.S. Senate contests on this ballot. <ul style="list-style-type: none"> • One for the regular 6-year term ending January 3, 2031 • One for the remainder of the current term ending January 3, 2025 You may vote for both contests.
<input type="radio"/> DONALD J. TRUMP	United States Senator (Full Term) Vote for One	
<input type="radio"/> CHRIS CHRISTIE	<input type="radio"/> LAURA GARZA Party Preference: None Freight Railroad Worker	<input type="radio"/> CHRISTINA PASCUCCI Party Preference: Democratic
<input type="radio"/> RYAN L BINKLEY	<input type="radio"/> SEPI GILANI Party Preference: Democratic Physician/Surgeon/Professor	<input type="radio"/> DAVID PETERSON Party Preference: Democratic Small Business Owner
<input type="radio"/> DAVID STUCKENBERG	<input type="radio"/> DON J. GRUNDMANN Party Preference: None Doctor of Chiropractic	<input type="radio"/> PERRY POUND Party Preference: Democratic Small Business Owner
<input type="radio"/> RACHEL SWIFT	<input type="radio"/> FORREST JONES Party Preference: American Independent	<input type="radio"/> KATIE PORTER Party Preference: Democratic U.S. Representative
<input type="radio"/> RON DESANTIS	<input type="radio"/> BARBARA LEE Party Preference: Democratic Congresswoman/Mother	<input type="radio"/> DOUGLAS H. PIERCE Party Preference: Democratic Missing Persons' Investigator
<input type="radio"/> VIVEK RAMASWAMY	<input type="radio"/> GAIL LIGHTFOOT Party Preference: Libertarian Retired Registered Nurse	<input type="radio"/> RAJI RAB Party Preference: Democratic Aviator/Educator/Entrepreneur
<input type="radio"/> NIKKI HALEY	<input type="radio"/> SARAH SUN LIEW Party Preference: Republican Pastor/Nonprofit CEO	<input type="radio"/> MARK RUZON Party Preference: None Software Engineer

SAMPLE BALLOT

<input type="radio"/> ASA HUTCHINSON	<input type="radio"/> SHARLETA BASSETT Party Preference: Republican Businesswoman/Mother/Farmer	<input type="radio"/> JONATHAN REISS Party Preference: Republican
<input type="radio"/> <small>Write-in</small>	<input type="radio"/> JAMES BRADLEY Party Preference: Republican Chief Executive Officer	<input type="radio"/> JOHN ROSE Party Preference: Democratic Office Manager
	<input type="radio"/> MARTIN VEPRASKAS Party Preference: Republican Retired Operations Manager	<input type="radio"/> HARMESH KUMAR Party Preference: Democratic Psychologist/Social Entrepreneur
	<input type="radio"/> ERIC EARLY Party Preference: Republican Business Owner/Attorney	<input type="radio"/> JAMES "JIM" MACAULEY Party Preference: Republican Sales Associate
	<input type="radio"/> ADAM B. SCHIFF Party Preference: Democratic United States Representative	<input type="radio"/> STEVE GARVEY Party Preference: Republican Professional Baseball Representative
	<input type="radio"/> MAJOR SINGH Party Preference: None Software Engineer	<input type="radio"/> DENICE GARY-PANDOL Party Preference: Republican Retired Security Analyst
	<input type="radio"/> STEFAN SIMCHOWITZ Party Preference: Republican Art Dealer	<input type="radio"/> <small>Write-in</small>
United States Senator (Partial/Unexpired Term)		
Vote for One		
<input type="radio"/> BARBARA LEE Party Preference: Democratic Congresswoman/Mother	<input type="radio"/> KATIE PORTER Party Preference: Democratic U.S. Representative	
<input type="radio"/> ERIC EARLY Party Preference: Republican Business Owner/Attorney	<input type="radio"/> STEVE GARVEY Party Preference: Republican Professional Baseball Representative	
<input type="radio"/> ADAM B. SCHIFF Party Preference: Democratic United States Representative	<input type="radio"/> SEPI GILANI Party Preference: Democratic Physician/Surgeon/Professor	
<input type="radio"/> CHRISTINA PASCUCCI Party Preference: Democratic	<input type="radio"/> <small>Write-in</small>	

SAMPLE BALLOT

51-SB2-RB



VOTE BOTH SIDES OF BALLOT



51-SB2-RC

VOTER-NOMINATED OFFICES	PARTY-NOMINATED OFFICES	MEASURES SUBMITTED TO THE VOTERS
UNITED STATES REPRESENTATIVE	COUNTY COMMITTEE	STATE
United States Representative District 1 Vote for One	Member, Republican Central Committee District 1 Vote for no more than Four	1 AUTHORIZES \$6.38 BILLION IN BONDS TO BUILD MENTAL HEALTH TREATMENT FACILITIES FOR THOSE WITH MENTAL HEALTH AND SUBSTANCE USE CHALLENGES; PROVIDES HOUSING FOR THE HOMELESS. LEGISLATIVE STATUTE. Amends Mental Health Services Act to provide additional behavioral health services. Fiscal Impact: Shift roughly \$140 million annually of existing tax revenue for mental health, drug, and alcohol treatment from counties to the state. Increased state bond repayment costs of \$310 million annually for 30 years. Supporters: California Professional Firefighters; CA Assoc. of Veteran Service Agencies; National Alliance on Mental Illness - CA Opponents: Mental Health America of California; Howard Jarvis Taxpayers Association; CalVoices
<input type="radio"/> ROSE PENELOPE YEE Party Preference: Democratic Finance Businesswoman/Investor	<input type="radio"/> ERIC GRUENTHAL Community Volunteer	
<input type="radio"/> MIKE DORAN Party Preference: Democratic School Board Member	<input type="radio"/> WILLIAM GRUENTHAL Farmer	
<input type="radio"/> DOUG LAMALFA Party Preference: Republican Farmer/United States Representative	<input type="radio"/> BRITNI FRENCH Hairstylist	
<input type="radio"/> _____ Write-in	<input type="radio"/> DWIGHT DAVIS Plant Operations Director	
STATE SENATOR	<input type="radio"/> AARON PAMMA Pharmacist/Farmer/Realtor	
State Senator District 1 Vote for One	<input type="radio"/> _____ Write-in	
<input type="radio"/> MEGAN DAHLE Party Preference: Republican Farmer/Businesswoman/Mother	<input type="radio"/> _____ Write-in	
<input type="radio"/> DAVID FENNELL Party Preference: Republican Entrepreneur	<input type="radio"/> _____ Write-in	
<input type="radio"/> _____ Write-in	<input type="radio"/> _____ Write-in	
MEMBER OF THE STATE ASSEMBLY	<input type="radio"/> _____ Write-in	
State Assembly Member District 3 Vote for One	Nonpartisan Offices All voters may vote in these contests. Candidates for these offices do not display a party preference.	
<input type="radio"/> AARON DRAPER Party Preference: Democratic Professor/Photographer	NONPARTISAN OFFICES	
<input type="radio"/> JAMIE "JAMES" GALLAGHER Party Preference: Republican Assemblyman/Farmer/Businessman	COUNTY	
<input type="radio"/> _____ Write-in	Supervisor - District 1	
	Vote for One	
	<input type="radio"/> JEFF BOONE Farmer/Businessman	

SAMPLE BALLOT

SAMPLE BALLOT

VOTE BOTH SIDES OF BALLOT

<input type="radio"/> NICHOLAS MICHELI County Supervisor/Farmer
<input type="radio"/> Write-in

51-SB2-RD





51-SB2-AA



OFFICIAL BALLOT
Presidential Primary Election
AMERICAN INDEPENDENT PARTY
Tuesday, March 5, 2024
County of Sutter



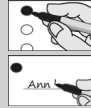
BT-2

INSTRUCTIONS TO VOTERS:

Completely fill in the oval to the left of your choice. Use a blue or black ink pen to mark your ballot. NO RED ink.

Only qualified write-in candidate votes will be counted. Write that person's name in the write-in space and fill in the oval.

If you make a mistake, clearly mark your intended choice and strikeout the mistake. If you would like a replacement ballot, contact our office or a poll worker.



Party-Nominated Offices
 Voters registered as a member of the American Independent Party may vote in this primary election for President and party committee. Some parties may allow voters with no party preference to vote in the party's primary election for President.

Voter-Nominated Offices
 All voters may vote in these contests. Candidates display a party preference (or None) for the information of voters. This is not a party endorsement or approval.

VOTER-NOMINATED OFFICES

UNITED STATES SENATOR

PARTY-NOMINATED OFFICES

PRESIDENT OF THE UNITED STATES

Presidential Preference

Vote for One

JAMES BRADLEY

Write-in

There are two U.S. Senate contests on this ballot.

- One for the regular 6-year term ending January 3, 2031
 - One for the remainder of the current term ending January 3, 2025
- You may vote for both contests.

**United States Senator
(Full Term)**

Vote for One

LAURA GARZA
 Party Preference: None
 Freight Railroad Worker

CHRISTINA PASCUCCI
 Party Preference: Democratic

SEPI GILANI
 Party Preference: Democratic
 Physician/Surgeon/Professor

DAVID PETERSON
 Party Preference: Democratic
 Small Business Owner

DON J. GRUNDMANN
 Party Preference: None
 Doctor of Chiropractic

PERRY POUND
 Party Preference: Democratic
 Small Business Owner

FORREST JONES
 Party Preference: American Independent

KATIE PORTER
 Party Preference: Democratic
 U.S. Representative

BARBARA LEE
 Party Preference: Democratic
 Congresswoman/Mother

DOUGLAS H. PIERCE
 Party Preference: Democratic
 Missing Persons' Investigator

GAIL LIGHTFOOT
 Party Preference: Libertarian
 Retired Registered Nurse

RAJI RAB
 Party Preference: Democratic
 Aviator/Educator/Entrepreneur

SARAH SUN LIEW
 Party Preference: Republican
 Pastor/Nonprofit CEO

MARK RUZON
 Party Preference: None
 Software Engineer

SAMPLE BALLOT



<input type="radio"/> SHARLETA BASSETT Party Preference: Republican Businesswoman/Mother/Farmer	<input type="radio"/> JONATHAN REISS Party Preference: Republican
<input type="radio"/> JAMES BRADLEY Party Preference: Republican Chief Executive Officer	<input type="radio"/> JOHN ROSE Party Preference: Democratic Office Manager
<input type="radio"/> MARTIN VEPRausKAS Party Preference: Republican Retired Operations Manager	<input type="radio"/> HARMESH KUMAR Party Preference: Democratic Psychologist/Social Entrepreneur
<input type="radio"/> ERIC EARLY Party Preference: Republican Business Owner/Attorney	<input type="radio"/> JAMES "JIM" MACAULEY Party Preference: Republican Sales Associate
<input type="radio"/> ADAM B. SCHIFF Party Preference: Democratic United States Representative	<input type="radio"/> STEVE GARVEY Party Preference: Republican Professional Baseball Representative
<input type="radio"/> MAJOR SINGH Party Preference: None Software Engineer	<input type="radio"/> DENICE GARY-PANDOL Party Preference: Republican Retired Security Analyst
<input type="radio"/> STEFAN SIMCHOWITZ Party Preference: Republican Art Dealer	<input type="radio"/> Write-in
United States Senator (Partial/Unexpired Term)	
Vote for One	
<input type="radio"/> BARBARA LEE Party Preference: Democratic Congresswoman/Mother	<input type="radio"/> KATIE PORTER Party Preference: Democratic U.S. Representative
<input type="radio"/> ERIC EARLY Party Preference: Republican Business Owner/Attorney	<input type="radio"/> STEVE GARVEY Party Preference: Republican Professional Baseball Representative
<input type="radio"/> ADAM B. SCHIFF Party Preference: Democratic United States Representative	<input type="radio"/> SEPI GILANI Party Preference: Democratic Physician/Surgeon/Professor
<input type="radio"/> CHRISTINA PASCUCCI Party Preference: Democratic	<input type="radio"/> Write-in

SAMPLE BALLOT



51-SB2-AC

VOTER-NOMINATED OFFICES	MEASURES SUBMITTED TO THE VOTERS
UNITED STATES REPRESENTATIVE	STATE
United States Representative District 1 Vote for One	1 AUTHORIZES \$6.38 BILLION IN BONDS TO BUILD MENTAL HEALTH TREATMENT FACILITIES FOR THOSE WITH MENTAL HEALTH AND SUBSTANCE USE CHALLENGES; PROVIDES HOUSING FOR THE HOMELESS. LEGISLATIVE STATUTE. Amends Mental Health Services Act to provide additional behavioral health services. Fiscal Impact: Shift roughly \$140 million annually of existing tax revenue for mental health, drug, and alcohol treatment from counties to the state. Increased state bond repayment costs of \$310 million annually for 30 years. Supporters: California Professional Firefighters; CA Assoc. of Veteran Service Agencies; National Alliance on Mental Illness - CA Opponents: Mental Health America of California; Howard Jarvis Taxpayers Association; CalVoices
<input type="radio"/> ROSE PENELOPE YEE Party Preference: Democratic Finance Businesswoman/Investor	
<input type="radio"/> MIKE DORAN Party Preference: Democratic School Board Member	
<input type="radio"/> DOUG LAMALFA Party Preference: Republican Farmer/United States Representative	
<input type="radio"/> Write-in	
STATE SENATOR	
State Senator District 1 Vote for One	
<input type="radio"/> MEGAN DAHLE Party Preference: Republican Farmer/Businesswoman/Mother	<input type="radio"/> YES
<input type="radio"/> DAVID FENNELL Party Preference: Republican Entrepreneur	<input type="radio"/> NO
<input type="radio"/> Write-in	
MEMBER OF THE STATE ASSEMBLY	
State Assembly Member District 3 Vote for One	
<input type="radio"/> AARON DRAPER Party Preference: Democratic Professor/Photographer	
<input type="radio"/> JAMIE "JAMES" GALLAGHER Party Preference: Republican Assemblyman/Farmer/Businessman	
<input type="radio"/> Write-in	
Nonpartisan Offices All voters may vote in these contests. Candidates for these offices do not display a party preference.	

SAMPLE BALLOT

NONPARTISAN OFFICES	
COUNTY	
Supervisor - District 1	
Vote for One	
<input type="radio"/>	JEFF BOONE Farmer/Businessman
<input type="radio"/>	NICHOLAS MICHELI County Supervisor/Farmer
<input type="radio"/>	<hr/> <small>Write-in</small>

51-SB2-AD



VOTE BOTH SIDES OF BALLOT

SAMPLE BALLOT



51-SB2-GA



OFFICIAL BALLOT
Presidential Primary Election
GREEN PARTY
Tuesday, March 5, 2024
County of Sutter



BT-2

INSTRUCTIONS TO VOTERS:

Completely fill in the oval to the left of your choice. Use a blue or black ink pen to mark your ballot. NO RED ink.

Only qualified write-in candidate votes will be counted. Write that person's name in the write-in space and fill in the oval.

If you make a mistake, clearly mark your intended choice and strikeout the mistake. If you would like a replacement ballot, contact our office or a poll worker.



Party-Nominated Offices
 Only voters registered as a member of the Green Party may vote in this primary election for President and party committee.

Voter-Nominated Offices
 All voters may vote in these contests. Candidates display a party preference (or None) for the information of voters. This is not a party endorsement or approval.

VOTER-NOMINATED OFFICES

PARTY-NOMINATED OFFICES

UNITED STATES SENATOR

PRESIDENT OF THE UNITED STATES

Presidential Candidate Preference
 Delegates to the national convention will be selected after the presidential preference primary election.

There are two U.S. Senate contests on this ballot.

- One for the regular 6-year term ending January 3, 2031
 - One for the remainder of the current term ending January 3, 2025
- You may vote for both contests.

Vote for a Candidate

**United States Senator
(Full Term)**

JILL STEIN

Write-in

<input type="radio"/> LAURA GARZA Party Preference: None Freight Railroad Worker	<input type="radio"/> CHRISTINA PASCUCCI Party Preference: Democratic
<input type="radio"/> SEPI GILANI Party Preference: Democratic Physician/Surgeon/Professor	<input type="radio"/> DAVID PETERSON Party Preference: Democratic Small Business Owner
<input type="radio"/> DON J. GRUNDMANN Party Preference: None Doctor of Chiropractic	<input type="radio"/> PERRY POUND Party Preference: Democratic Small Business Owner
<input type="radio"/> FORREST JONES Party Preference: American Independent	<input type="radio"/> KATIE PORTER Party Preference: Democratic U.S. Representative
<input type="radio"/> BARBARA LEE Party Preference: Democratic Congresswoman/Mother	<input type="radio"/> DOUGLAS H. PIERCE Party Preference: Democratic Missing Persons' Investigator
<input type="radio"/> GAIL LIGHTFOOT Party Preference: Libertarian Retired Registered Nurse	<input type="radio"/> RAJI RAB Party Preference: Democratic Aviator/Educator/Entrepreneur
<input type="radio"/> SARAH SUN LIEW Party Preference: Republican Pastor/Nonprofit CEO	<input type="radio"/> MARK RUZON Party Preference: None Software Engineer

Vote for One

SAMPLE BALLOT



<input type="radio"/> SHARLETA BASSETT Party Preference: Republican Businesswoman/Mother/Farmer	<input type="radio"/> JONATHAN REISS Party Preference: Republican
<input type="radio"/> JAMES BRADLEY Party Preference: Republican Chief Executive Officer	<input type="radio"/> JOHN ROSE Party Preference: Democratic Office Manager
<input type="radio"/> MARTIN VEPRASKAS Party Preference: Republican Retired Operations Manager	<input type="radio"/> HARMESH KUMAR Party Preference: Democratic Psychologist/Social Entrepreneur
<input type="radio"/> ERIC EARLY Party Preference: Republican Business Owner/Attorney	<input type="radio"/> JAMES "JIM" MACAULEY Party Preference: Republican Sales Associate
<input type="radio"/> ADAM B. SCHIFF Party Preference: Democratic United States Representative	<input type="radio"/> STEVE GARVEY Party Preference: Republican Professional Baseball Representative
<input type="radio"/> MAJOR SINGH Party Preference: None Software Engineer	<input type="radio"/> DENICE GARY-PANDOL Party Preference: Republican Retired Security Analyst
<input type="radio"/> STEFAN SIMCHOWITZ Party Preference: Republican Art Dealer	<input type="radio"/> _____ <small>Write-in</small>
United States Senator (Partial/Unexpired Term)	
Vote for One	
<input type="radio"/> BARBARA LEE Party Preference: Democratic Congresswoman/Mother	<input type="radio"/> KATIE PORTER Party Preference: Democratic U.S. Representative
<input type="radio"/> ERIC EARLY Party Preference: Republican Business Owner/Attorney	<input type="radio"/> STEVE GARVEY Party Preference: Republican Professional Baseball Representative
<input type="radio"/> ADAM B. SCHIFF Party Preference: Democratic United States Representative	<input type="radio"/> SEPI GILANI Party Preference: Democratic Physician/Surgeon/Professor
<input type="radio"/> CHRISTINA PASCUCCI Party Preference: Democratic	<input type="radio"/> _____ <small>Write-in</small>

SAMPLE BALLOT



51-SB2-GC

VOTER-NOMINATED OFFICES	MEASURES SUBMITTED TO THE VOTERS
UNITED STATES REPRESENTATIVE	STATE
United States Representative District 1 Vote for One	1 AUTHORIZES \$6.38 BILLION IN BONDS TO BUILD MENTAL HEALTH TREATMENT FACILITIES FOR THOSE WITH MENTAL HEALTH AND SUBSTANCE USE CHALLENGES; PROVIDES HOUSING FOR THE HOMELESS. LEGISLATIVE STATUTE. Amends Mental Health Services Act to provide additional behavioral health services. Fiscal Impact: Shift roughly \$140 million annually of existing tax revenue for mental health, drug, and alcohol treatment from counties to the state. Increased state bond repayment costs of \$310 million annually for 30 years. Supporters: California Professional Firefighters; CA Assoc. of Veteran Service Agencies; National Alliance on Mental Illness - CA Opponents: Mental Health America of California; Howard Jarvis Taxpayers Association; CalVoices
<input type="radio"/> ROSE PENELOPE YEE Party Preference: Democratic Finance Businesswoman/Investor	
<input type="radio"/> MIKE DORAN Party Preference: Democratic School Board Member	
<input type="radio"/> DOUG LAMALFA Party Preference: Republican Farmer/United States Representative	
<input type="radio"/> Write-in	
STATE SENATOR	
State Senator District 1 Vote for One	
<input type="radio"/> MEGAN DAHLE Party Preference: Republican Farmer/Businesswoman/Mother	<input type="radio"/> YES
<input type="radio"/> DAVID FENNELL Party Preference: Republican Entrepreneur	<input type="radio"/> NO
<input type="radio"/> Write-in	
MEMBER OF THE STATE ASSEMBLY	
State Assembly Member District 3 Vote for One	
<input type="radio"/> AARON DRAPER Party Preference: Democratic Professor/Photographer	
<input type="radio"/> JAMIE "JAMES" GALLAGHER Party Preference: Republican Assemblyman/Farmer/Businessman	
<input type="radio"/> Write-in	
Nonpartisan Offices All voters may vote in these contests. Candidates for these offices do not display a party preference.	

SAMPLE BALLOT

NONPARTISAN OFFICES	
COUNTY	
Supervisor - District 1	
Vote for One	
<input type="radio"/>	JEFF BOONE Farmer/Businessman
<input type="radio"/>	NICHOLAS MICHELI County Supervisor/Farmer
<input type="radio"/>	_____
	Write-in

51-SB2-GD



VOTE BOTH SIDES OF BALLOT

SAMPLE BALLOT



51-SB2-LA



OFFICIAL BALLOT
Presidential Primary Election
LIBERTARIAN PARTY
Tuesday, March 5, 2024
County of Sutter



BT-2

INSTRUCTIONS TO VOTERS:

Completely fill in the oval to the left of your choice. Use a blue or black ink pen to mark your ballot. NO RED ink.

Only qualified write-in candidate votes will be counted. Write that person's name in the write-in space and fill in the oval.

If you make a mistake, clearly mark your intended choice and strikeout the mistake. If you would like a replacement ballot, contact our office or a poll worker.



Party-Nominated Offices
 Voters registered as a member of the Libertarian Party may vote in this primary election for President and party committee. Some parties may allow voters with no party preference to vote in the party's primary election for President.

Voter-Nominated Offices
 All voters may vote in these contests. Candidates display a party preference (or None) for the information of voters. This is not a party endorsement or approval.

VOTER-NOMINATED OFFICES

UNITED STATES SENATOR

PARTY-NOMINATED OFFICES

PRESIDENT OF THE UNITED STATES

Presidential Preference

Vote for One

CHARLES BALLAY

Write-in

There are two U.S. Senate contests on this ballot.

- One for the regular 6-year term ending January 3, 2031
 - One for the remainder of the current term ending January 3, 2025
- You may vote for both contests.

**United States Senator
(Full Term)**

Vote for One

LAURA GARZA
 Party Preference: None
 Freight Railroad Worker

CHRISTINA PASCUCCI
 Party Preference: Democratic

SEPI GILANI
 Party Preference: Democratic
 Physician/Surgeon/Professor

DAVID PETERSON
 Party Preference: Democratic
 Small Business Owner

DON J. GRUNDMANN
 Party Preference: None
 Doctor of Chiropractic

PERRY POUND
 Party Preference: Democratic
 Small Business Owner

FORREST JONES
 Party Preference: American Independent

KATIE PORTER
 Party Preference: Democratic
 U.S. Representative

BARBARA LEE
 Party Preference: Democratic
 Congresswoman/Mother

DOUGLAS H. PIERCE
 Party Preference: Democratic
 Missing Persons' Investigator

GAIL LIGHTFOOT
 Party Preference: Libertarian
 Retired Registered Nurse

RAJI RAB
 Party Preference: Democratic
 Aviator/Educator/Entrepreneur

SARAH SUN LIEW
 Party Preference: Republican
 Pastor/Nonprofit CEO

MARK RUZON
 Party Preference: None
 Software Engineer

SAMPLE BALLOT



<input type="radio"/> SHARLETA BASSETT Party Preference: Republican Businesswoman/Mother/Farmer	<input type="radio"/> JONATHAN REISS Party Preference: Republican
<input type="radio"/> JAMES BRADLEY Party Preference: Republican Chief Executive Officer	<input type="radio"/> JOHN ROSE Party Preference: Democratic Office Manager
<input type="radio"/> MARTIN VEPRAUSKAS Party Preference: Republican Retired Operations Manager	<input type="radio"/> HARMESH KUMAR Party Preference: Democratic Psychologist/Social Entrepreneur
<input type="radio"/> ERIC EARLY Party Preference: Republican Business Owner/Attorney	<input type="radio"/> JAMES "JIM" MACAULEY Party Preference: Republican Sales Associate
<input type="radio"/> ADAM B. SCHIFF Party Preference: Democratic United States Representative	<input type="radio"/> STEVE GARVEY Party Preference: Republican Professional Baseball Representative
<input type="radio"/> MAJOR SINGH Party Preference: None Software Engineer	<input type="radio"/> DENICE GARY-PANDOL Party Preference: Republican Retired Security Analyst
<input type="radio"/> STEFAN SIMCHOWITZ Party Preference: Republican Art Dealer	<input type="radio"/> _____ <small>Write-in</small>
United States Senator (Partial/Unexpired Term)	
Vote for One	
<input type="radio"/> BARBARA LEE Party Preference: Democratic Congresswoman/Mother	<input type="radio"/> KATIE PORTER Party Preference: Democratic U.S. Representative
<input type="radio"/> ERIC EARLY Party Preference: Republican Business Owner/Attorney	<input type="radio"/> STEVE GARVEY Party Preference: Republican Professional Baseball Representative
<input type="radio"/> ADAM B. SCHIFF Party Preference: Democratic United States Representative	<input type="radio"/> SEPI GILANI Party Preference: Democratic Physician/Surgeon/Professor
<input type="radio"/> CHRISTINA PASCUCCI Party Preference: Democratic	<input type="radio"/> _____ <small>Write-in</small>

SAMPLE BALLOT



51-SB2-LC

VOTER-NOMINATED OFFICES	MEASURES SUBMITTED TO THE VOTERS
UNITED STATES REPRESENTATIVE	STATE
United States Representative District 1	1 AUTHORIZES \$6.38 BILLION IN BONDS TO BUILD MENTAL HEALTH TREATMENT FACILITIES FOR THOSE WITH MENTAL HEALTH AND SUBSTANCE USE CHALLENGES; PROVIDES HOUSING FOR THE HOMELESS. LEGISLATIVE STATUTE. Amends Mental Health Services Act to provide additional behavioral health services. Fiscal Impact: Shift roughly \$140 million annually of existing tax revenue for mental health, drug, and alcohol treatment from counties to the state. Increased state bond repayment costs of \$310 million annually for 30 years. Supporters: California Professional Firefighters; CA Assoc. of Veteran Service Agencies; National Alliance on Mental Illness - CA Opponents: Mental Health America of California; Howard Jarvis Taxpayers Association; CalVoices
<input type="radio"/> ROSE PENELOPE YEE Party Preference: Democratic Finance Businesswoman/Investor	
<input type="radio"/> MIKE DORAN Party Preference: Democratic School Board Member	
<input type="radio"/> DOUG LAMALFA Party Preference: Republican Farmer/United States Representative	
<input type="radio"/> Write-in	
STATE SENATOR	
State Senator District 1	
<input type="radio"/> MEGAN DAHLE Party Preference: Republican Farmer/Businesswoman/Mother	<input type="radio"/> YES
<input type="radio"/> DAVID FENNELL Party Preference: Republican Entrepreneur	<input type="radio"/> NO
<input type="radio"/> Write-in	
MEMBER OF THE STATE ASSEMBLY	
State Assembly Member District 3	
<input type="radio"/> AARON DRAPER Party Preference: Democratic Professor/Photographer	
<input type="radio"/> JAMIE "JAMES" GALLAGHER Party Preference: Republican Assemblyman/Farmer/Businessman	
<input type="radio"/> Write-in	
Nonpartisan Offices All voters may vote in these contests. Candidates for these offices do not display a party preference.	

SAMPLE BALLOT

NONPARTISAN OFFICES	
COUNTY	
Supervisor - District 1	
Vote for One	
<input type="radio"/>	JEFF BOONE Farmer/Businessman
<input type="radio"/>	NICHOLAS MICHELI County Supervisor/Farmer
<input type="radio"/>	_____
	<small>Write-in</small>

51-SB2-LD



VOTE BOTH SIDES OF BALLOT

SAMPLE BALLOT



51-SB2-PA



OFFICIAL BALLOT
Presidential Primary Election
PEACE AND FREEDOM PARTY
Tuesday, March 5, 2024
County of Sutter



BT-2

INSTRUCTIONS TO VOTERS:

Completely fill in the oval to the left of your choice. Use a blue or black ink pen to mark your ballot. NO RED ink.

Only qualified write-in candidate votes will be counted. Write that person's name in the write-in space and fill in the oval.

If you make a mistake, clearly mark your intended choice and strikeout the mistake. If you would like a replacement ballot, contact our office or a poll worker.



Party-Nominated Offices
 Only voters registered as a member of the Peace and Freedom Party may vote in this primary election for President and party committee.

Voter-Nominated Offices
 All voters may vote in these contests. Candidates display a party preference (or None) for the information of voters. This is not a party endorsement or approval.

VOTER-NOMINATED OFFICES

PARTY-NOMINATED OFFICES

UNITED STATES SENATOR

PRESIDENT OF THE UNITED STATES

There are two U.S. Senate contests on this ballot.

- One for the regular 6-year term ending January 3, 2031
 - One for the remainder of the current term ending January 3, 2025
- You may vote for both contests.

Presidential Preference

Vote for One

CLAUDIA DE LA CRUZ

**United States Senator
(Full Term)**

Vote for One

CORNEL WEST

LAURA GARZA
 Party Preference: None
 Freight Railroad Worker

CHRISTINA PASCUCCI
 Party Preference: Democratic

JASMINE SHERMAN

SEPI GILANI
 Party Preference: Democratic
 Physician/Surgeon/Professor

DAVID PETERSON
 Party Preference: Democratic
 Small Business Owner

Write-in

DON J. GRUNDMANN
 Party Preference: None
 Doctor of Chiropractic

PERRY POUND
 Party Preference: Democratic
 Small Business Owner

FORREST JONES
 Party Preference: American Independent

KATIE PORTER
 Party Preference: Democratic
 U.S. Representative

BARBARA LEE
 Party Preference: Democratic
 Congresswoman/Mother

DOUGLAS H. PIERCE
 Party Preference: Democratic
 Missing Persons' Investigator

GAIL LIGHTFOOT
 Party Preference: Libertarian
 Retired Registered Nurse

RAJI RAB
 Party Preference: Democratic
 Aviator/Educator/Entrepreneur

SARAH SUN LIEW
 Party Preference: Republican
 Pastor/Nonprofit CEO

MARK RUZON
 Party Preference: None
 Software Engineer

SAMPLE BALLOT



<input type="radio"/> SHARLETA BASSETT Party Preference: Republican Businesswoman/Mother/Farmer	<input type="radio"/> JONATHAN REISS Party Preference: Republican
<input type="radio"/> JAMES BRADLEY Party Preference: Republican Chief Executive Officer	<input type="radio"/> JOHN ROSE Party Preference: Democratic Office Manager
<input type="radio"/> MARTIN VEPRausKAS Party Preference: Republican Retired Operations Manager	<input type="radio"/> HARMESH KUMAR Party Preference: Democratic Psychologist/Social Entrepreneur
<input type="radio"/> ERIC EARLY Party Preference: Republican Business Owner/Attorney	<input type="radio"/> JAMES "JIM" MACAULEY Party Preference: Republican Sales Associate
<input type="radio"/> ADAM B. SCHIFF Party Preference: Democratic United States Representative	<input type="radio"/> STEVE GARVEY Party Preference: Republican Professional Baseball Representative
<input type="radio"/> MAJOR SINGH Party Preference: None Software Engineer	<input type="radio"/> DENICE GARY-PANDOL Party Preference: Republican Retired Security Analyst
<input type="radio"/> STEFAN SIMCHOWITZ Party Preference: Republican Art Dealer	<input type="radio"/> _____ <small>Write-in</small>
United States Senator (Partial/Unexpired Term)	
Vote for One	
<input type="radio"/> BARBARA LEE Party Preference: Democratic Congresswoman/Mother	<input type="radio"/> KATIE PORTER Party Preference: Democratic U.S. Representative
<input type="radio"/> ERIC EARLY Party Preference: Republican Business Owner/Attorney	<input type="radio"/> STEVE GARVEY Party Preference: Republican Professional Baseball Representative
<input type="radio"/> ADAM B. SCHIFF Party Preference: Democratic United States Representative	<input type="radio"/> SEPI GILANI Party Preference: Democratic Physician/Surgeon/Professor
<input type="radio"/> CHRISTINA PASCUCCI Party Preference: Democratic	<input type="radio"/> _____ <small>Write-in</small>

SAMPLE BALLOT



51-SB2-PC

VOTER-NOMINATED OFFICES	MEASURES SUBMITTED TO THE VOTERS
UNITED STATES REPRESENTATIVE	STATE
United States Representative District 1 Vote for One	1 AUTHORIZES \$6.38 BILLION IN BONDS TO BUILD MENTAL HEALTH TREATMENT FACILITIES FOR THOSE WITH MENTAL HEALTH AND SUBSTANCE USE CHALLENGES; PROVIDES HOUSING FOR THE HOMELESS. LEGISLATIVE STATUTE. Amends Mental Health Services Act to provide additional behavioral health services. Fiscal Impact: Shift roughly \$140 million annually of existing tax revenue for mental health, drug, and alcohol treatment from counties to the state. Increased state bond repayment costs of \$310 million annually for 30 years. Supporters: California Professional Firefighters; CA Assoc. of Veteran Service Agencies; National Alliance on Mental Illness - CA Opponents: Mental Health America of California; Howard Jarvis Taxpayers Association; CalVoices
<input type="radio"/> ROSE PENELOPE YEE Party Preference: Democratic Finance Businesswoman/Investor	
<input type="radio"/> MIKE DORAN Party Preference: Democratic School Board Member	
<input type="radio"/> DOUG LAMALFA Party Preference: Republican Farmer/United States Representative	
<input type="radio"/> Write-in	
STATE SENATOR	
State Senator District 1 Vote for One	<input type="radio"/> YES <input type="radio"/> NO
<input type="radio"/> MEGAN DAHLE Party Preference: Republican Farmer/Businesswoman/Mother	
<input type="radio"/> DAVID FENNELL Party Preference: Republican Entrepreneur	
<input type="radio"/> Write-in	
MEMBER OF THE STATE ASSEMBLY	
State Assembly Member District 3 Vote for One	
<input type="radio"/> AARON DRAPER Party Preference: Democratic Professor/Photographer	
<input type="radio"/> JAMIE "JAMES" GALLAGHER Party Preference: Republican Assemblyman/Farmer/Businessman	
<input type="radio"/> Write-in	

SAMPLE BALLOT

Nonpartisan Offices
All voters may vote in these contests.
Candidates for these offices do not display a party preference.

NONPARTISAN OFFICES

COUNTY

Supervisor - District 1

Vote for One

JEFF BOONE
Farmer/Businessman

NICHOLAS MICHELI
County Supervisor/Farmer

Write-in

SAMPLE BALLOT

VOTE BOTH SIDES OF BALLOT

51-SB2-PD



A facsimile ballot in the following languages will be available at all polling places: Spanish, Punjabi and Tagalog.

You may bring up to two individuals with you to your polling place to help you cast your ballot, as long as those individuals do not represent your employer or your union.

Voting by mail?

You can request a copy of your ballot in these languages be mailed to you.

- Call us at 530-822-7122
- Email us at elections@co.sutter.ca.us

ESPAÑOL

Una boleta facsímil en los siguientes idiomas estará disponible en todos los lugares de votación: español, punjabi y tagalo.

Usted puede traer dos individuos a la estación de votación para que le ayuden a emitir su voto. Sus acompañantes no pueden ser representantes de su empleador o sindicato.

¿Votando por correo?

Puede solicitar que le enviemos una copia de su boleta en español.

- Llámenos al 530-822-7122
- Envíenos un correo electrónico a elections@co.sutter.ca.us

TAGALOG

Bisitahin ang aming website upang makita ang isang listahan ng mga lugar ng botohan kung saan ang mga sumusunod na materyal ay makukuha.

Maaari kang magsama ng hanggang (2) tao sa iyong lugar ng botohan upang tulungan na ipatala ang iyong balota sa kondisyon na ang mga taong ito ay hindi kumakatawan sa iyong pinagatrabahuhan o unyon.

Pagboto sa pamamagitan ng koreo

Makahihiling ka na ipakoreo sa iyo ang isang kopya ng iyong balota sa Kastila, Punjabi at Tagalog sa pamamagitan ng mga sumusunod na paraan: Tumawag sa 530-822-7122

Email elections@co.sutter.ca.us

ਮਤਦਾਨ ਦੀਆਂ ਸਾਰੀਆਂ ਥਾਂਵਾਂ 'ਤੇ ਇਹਨਾਂ ਭਾਸ਼ਾਵਾਂ ਵਿੱਚ ਇੱਕ ਪ੍ਰਤੀਕਿਰਤੀ ਬੈਲਟ ਉਪਲਬਧ ਹੋਵੇਗਾ: ਸਪੈਨਿਸ਼, ਪੰਜਾਬੀ ਅਤੇ ਟੈਗਾਲੋਗ।

ਤੁਸੀਂ ਆਪਣੀ ਵੋਟ ਪਾਉਣ ਵਿੱਚ ਮਦਦ ਕਰਨ ਲਈ ਆਪਣੇ ਮਤਦਾਨ ਦੀ ਥਾਂ 'ਤੇ ਦੋ ਤੱਕ ਵਿਅਕਤੀਆਂ ਨੂੰ ਆਪਣੇ ਨਾਲ ਲਿਆ ਸਕਦੇ ਹੋ, ਜਦੋਂ ਤੱਕ ਕਿ ਉਹ ਵਿਅਕਤੀ ਤੁਹਾਡੇ ਰੁਜ਼ਗਾਰਦਾਤਾ ਜਾਂ ਤੁਹਾਡੀ ਯੂਨੀਅਨ ਦੀ ਨੁਮਾਇੰਦਗੀ ਨਾ ਕਰਦੇ ਹੋ।

ਡਾਕ ਦੁਆਰਾ ਵੋਟਿੰਗ ਕਰਨਾ ਚਾਹੁੰਦੇ ਹੋ?

ਤੁਸੀਂ ਇਹਨਾਂ ਭਾਸ਼ਾਵਾਂ ਵਿੱਚ ਆਪਣੇ ਬੈਲਟ ਦੀ ਇੱਕ ਕਾਪੀ ਤੁਹਾਨੂੰ ਡਾਕ ਰਾਹੀਂ ਭੇਜਣ ਲਈ ਬੇਨਤੀ ਕਰ ਸਕਦੇ ਹੋ।

- ਸਾਨੂੰ 530-822-7122 'ਤੇ ਕਾਲ ਕਰੋ
- ਸਾਨੂੰ Election@co.sutter.ca.us 'ਤੇ ਈਮੇਲ ਭੇਜੋ



DID YOU KNOW?

You can track your ballot from when it is in the mail to you, and when it is received in the Elections Office, to when it is counted?

Follow these 4 easy steps to track your mail ballot every step of the way:

Step 1:

Go to <https://california.ballottrax.net/voter/>.

Step 2:

On the Get Started page, enter your required personal information, click on: Register/Log In

Step 3:

On the Contact Preference page, scroll down and select how you would like to receive your notifications.

- Email, Text and/or Voice Call
- Notification Hours
- Language

After making your selections, click on CONFIRM

Step 4:

Follow the instructions after you confirm to make sure you receive your notifications.

Tracking your mail ballot – when it is mailed, received, and counted – has never been easier!

OR:



You can sign up with the USPS for Informed Delivery to digitally preview all of your mail and manage all of your packages scheduled to arrive! You will receive an email notification that allows you to view greyscale images of the exterior, address side of letter-size mail pieces. To get Informed Delivery by USPS:

Step 1:

Create your Account by going to <https://informedelivery.usps.com>

Step 2:

Verify your Identity: Protect your privacy and personal information by verifying your identity and address.

Step 3:

Receive notifications: View notifications from any smartphone, tablet or computer.





An important message from the Sutter County Registrar of Voters For the March 5, 2024 Presidential Primary Election

All Eligible Voters Will Be Mailed a Ballot

All eligible registered voters in Sutter County will receive a ballot by mail for the March 5, 2024 Presidential Primary Election. However, Sutter County will be utilizing polling places this election on Election Day where you can request a ballot or drop off your voted ballot.

Polling Place Hours: Election Day, March 5, 2024; 7 a.m. to 8 p.m.

- ✓ AK School- 1700 Camino De Flores, Yuba City, CA 95993
- ✓ East Nicolaus Fire Department- 1988 Nicolaus Ave, Nicolaus, CA 95659
- ✓ Franklin Elementary School- 332 N Township Rd, Yuba City, CA 95993
- ✓ Live Oak Community Building- 10200 O Street, Live Oak, CA 95953
- ✓ Pleasant Grove Fire Department- 3100 Howsley Road, Pleasant Grove, CA 95668
- ✓ Riverbend Elementary School- 301 Stewart Rd, Yuba City, CA 95991
- ✓ St Andrew Presbyterian Church- 1390 Franklin Rd, Yuba City, CA 95993
- ✓ Sutter County Elections- 1435 Veterans Memorial Circle, Yuba City, CA 95993
- ✓ Sutter Union High School- 2665 Acacia Avenue, Sutter, CA 95982
- ✓ Tierra Buena School- 1794 Villa Ave, Yuba City, CA 95993
- ✓ United Pentecostal Church- 2649 E Onstott Rd, Yuba City, CA 95991
- ✓ Veterans Center- 1425 Veterans Memorial Circle, Yuba City, CA 95993
- ✓ Walnut Avenue Community Center- 1431 Walnut Ave, Yuba City, CA 95993
- ✓ Yuba-Sutter Fairgrounds (Flower House)- 442 Franklin Ave, Yuba City, CA 95991

Drop Box Locations:

Exterior (Available 24 hours):

- ✓ Sutter County Elections, 1435 Veterans Memorial Circle, Yuba City, CA 95953
- ✓ Sutter County Clerk Recorder, 433 Second Street, Yuba City, CA 95991
- ✓ Sutter County Fire Station, 2340 California Street, Sutter, CA 95982
- ✓ Live Oak City Hall, 9955 Live Oak Boulevard, Live Oak, CA 95953
- ✓ Pleasant Grove Fire Department, 3100 Howsley Road, Pleasant Grove, CA 95668

Contact Us:

Website: www.suttercounty.org

Email: elections@co.sutter.ca.us

Phone: (530) 822-7122

Accessibility: 1-800-TDD-VOTE. Disability Rights California will also be operating a statewide Voting Hotline on Election Day: 1-888-569-7955

Visit Secretary of State's Website: www.sos.ca.gov for information on State and Federal Candidates.

