



Measure A



About Sutter County

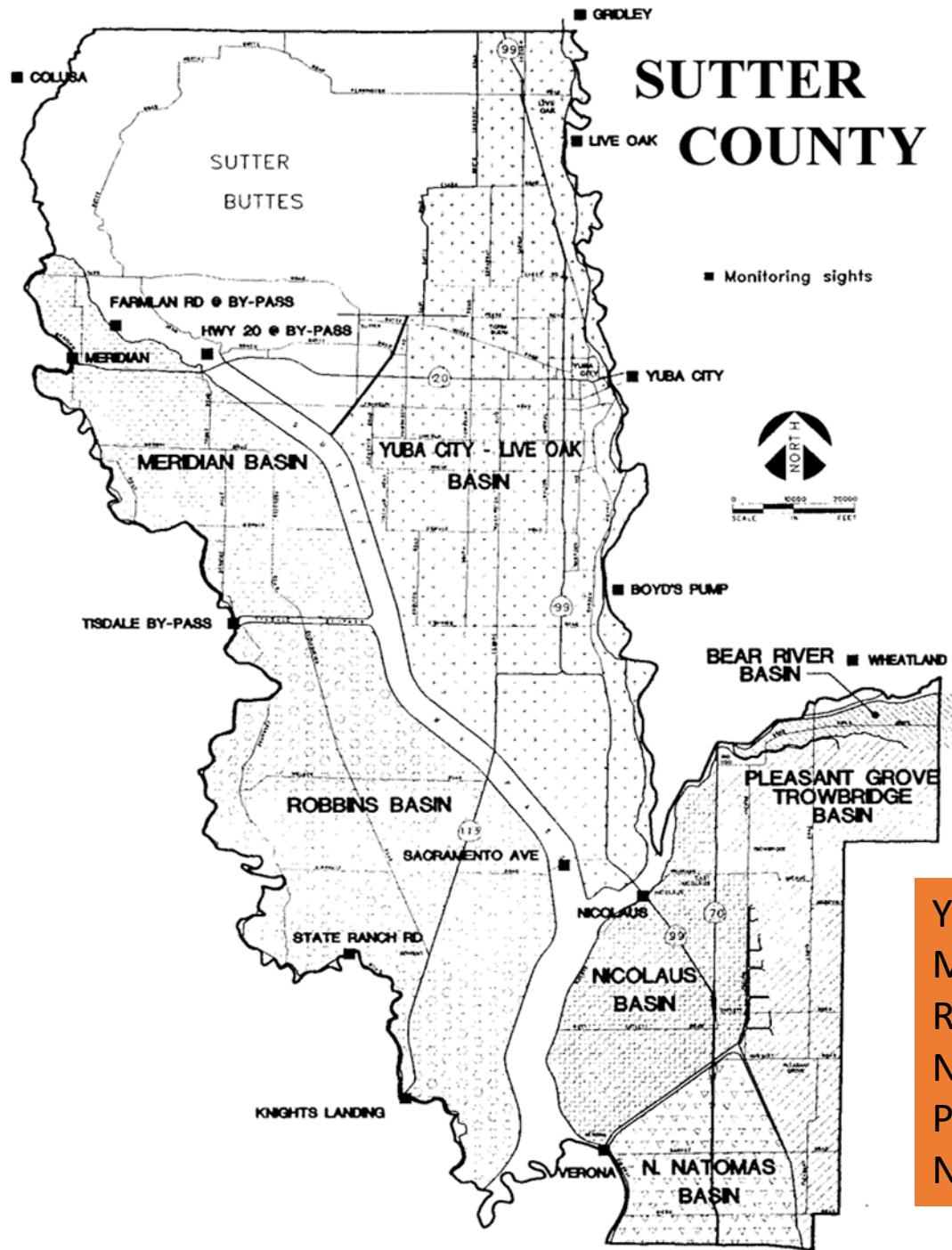
Founded:	1850
Size:	603 Square Miles
Population:	99,063
Prime farm land:	88 percent
River levee miles:	260
FEMA/state flood zone	68 percent



Sutter County Unique

- Only county with boundaries entirely on the floor of the Sacramento Valley
- Repeated flooding created prime agricultural soil
- No other county is so impacted by floodplains
- One of only 2 counties without CalFire
- Only county to not receive PILT

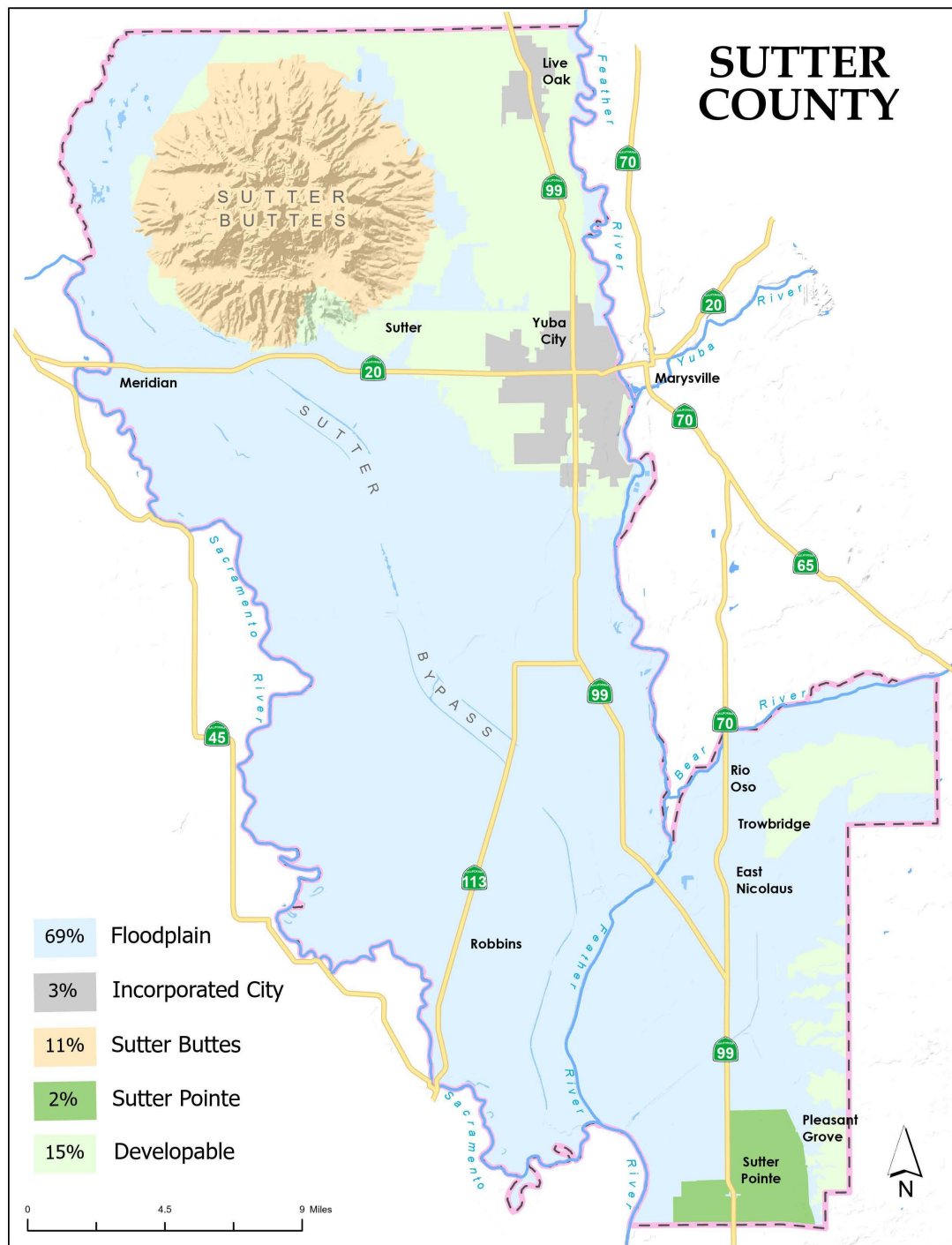




Sutter County has 6 distinct flood basins, separated and defined by 260 miles of flood mitigation levees.

- Yuba City basin
- Meridian basin
- Robbings basin
- Nicolaus basin
- Pleasant Grove basin
- North Natomas basin

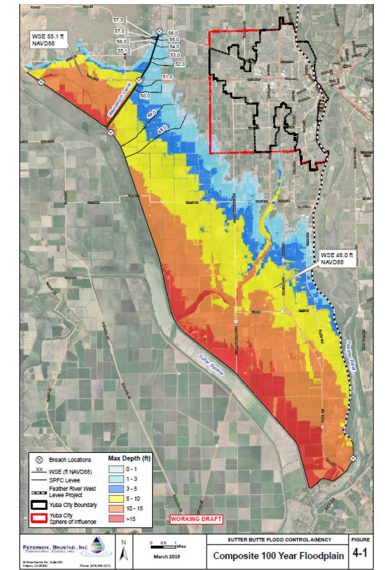
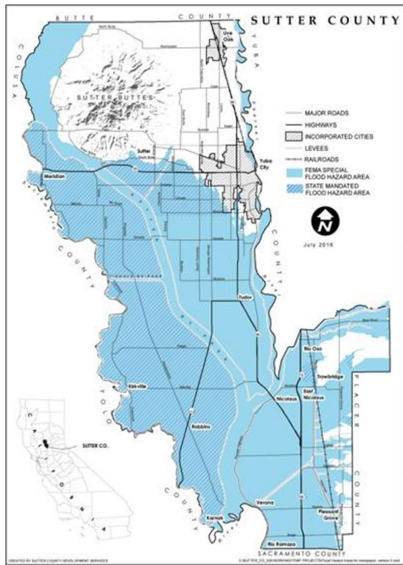




Seven of every 10 acres is in either a federal or state designated flood plain, with severe restrictions on development. No other county faces this challenge.



Floodplain Issue: A Blessing And A Curse



The Good

Sutter County will not develop like other California counties.

The Bad

Sutter County will not develop like other California counties.

What keeps us small with lots of open space, with lots of fertile land for farming, and plenty of recreational opportunities, also keeps us from developing and generating sufficient revenue to meet local needs. That's a price we pay for living in paradise.



Grand Jury Report: Unmet Fire Needs

Like much of California, Sutter County is grappling with increasingly difficult fire seasons.

A recent Grand Jury report found that Sutter County is facing serious problems with fire protection, including:

- Outdated equipment
- Staffing shortages
- Inadequate funding streams

Sutter County Board of Supervisors Response to 2020-21 Grand Jury Final Report

Sutter County Fire and Emergency Services Is Sutter County Playing With Fire?

The Sutter County Board of Supervisors and the Live Oak City Council (in part) are required to respond to this report. The Sutter County Administrative Officer (CAO), City Manager of Yuba City, Sutter County Office of Emergency Management, Sutter County Fire Services, Meridian Basin Fire Protection District Governing Board, Sutter Basin (Robbins) Fire Protection District Governing Board, and Sutter County LAFCO Board were all invited to respond.

Response from the Board of Supervisors:

F1: The Board of Supervisors agrees with this finding.

F2: The Board of Supervisors agrees with this finding.

F3: The Board of Supervisors agrees with the finding that the CSAs need to be combined for maximum efficiency, but disagrees with the finding that the fund accounting mechanism that is employed (which is required by State law) is "convoluted".

F4: The Board of Supervisors agrees with this finding.

F5: The Board of Supervisors agrees with this finding.

F6: The Board of Supervisors agrees with this finding.

F7: The Board of Supervisors agrees with this finding.

How Does This Impact Fire Services Countywide?

Increase to Fire Response Times

- Currently, the response time is about 5 minutes. Without additional funding, it could be raised to as much as 20 minutes.

Closure of a Fire Station

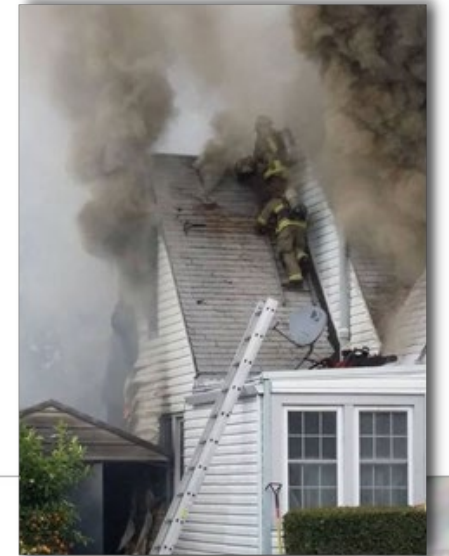
- Without additional funding, the closure of a fire station is a near certainty.

Impacts to Mutual Aid

- Sutter County currently fulfills mutual aid requirements, which would become more difficult to honor if a fire station is closed.

Potential Increase in Fire Damage/Insurance Rates

- Longer response times could increase the risk of fire damage, which might lead to increases in fire insurance rates for people throughout the county.
- Currently, the county does not have the funding to replace aging firefighting equipment.



Board actions to assist Fire Department

The Sutter County Board of Supervisors has made every effort to prevent cuts in fire services, including \$3.2 million in emergency allocations in the last two years for:

- Forgiveness of a loan for building the Fire Station in community of Sutter
- Purchase of two fire engines
- Funding additional firefighter positions
- Funding for general operating expenses
- Additional PPE for staff



Impact on Other Underfunded County Services

Within the current Sutter County Budget, reallocation of funds to address fire needs would significantly impact other services that also need additional funding, including:

Public Safety—including reducing number of sheriff's deputies patrolling neighborhoods

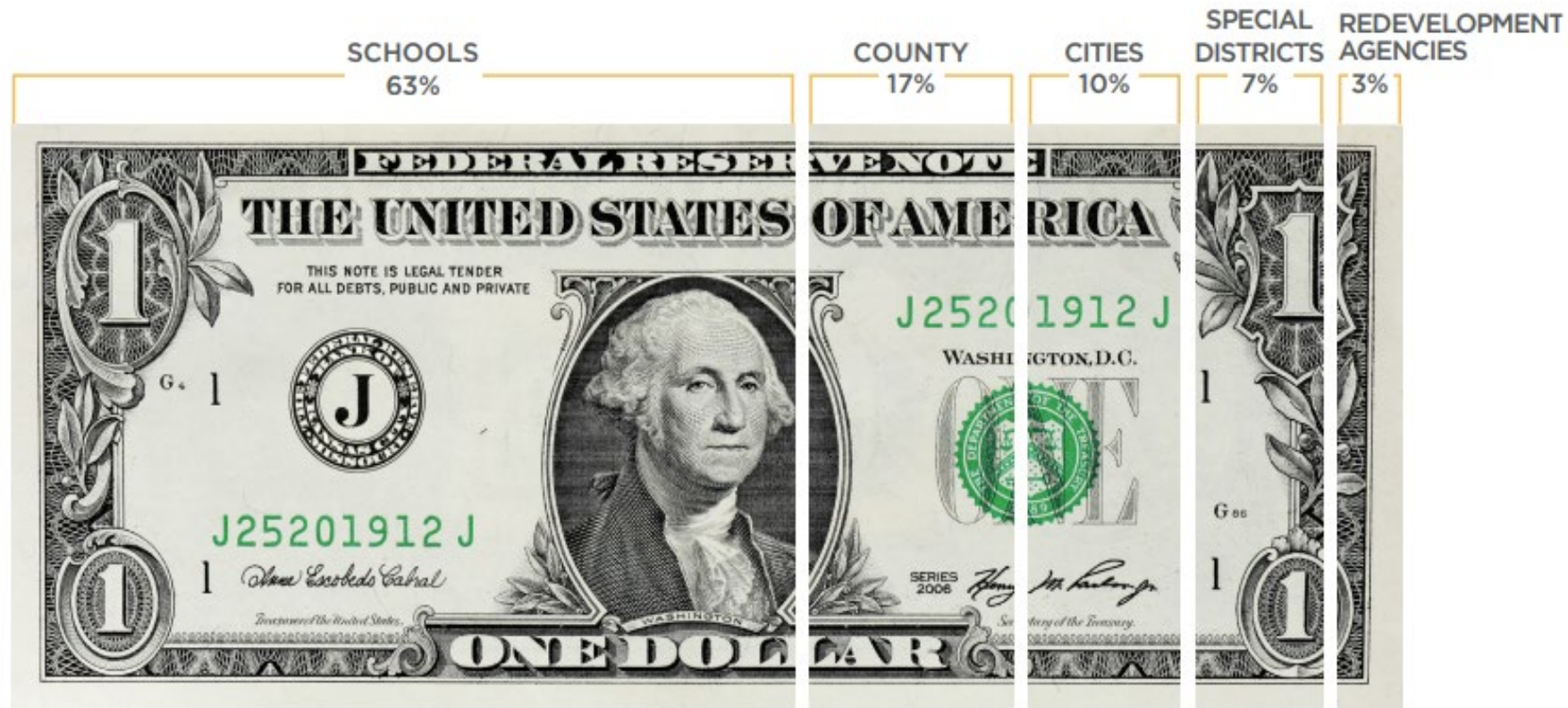
Road Repair – including culverts and irrigation canal bridges

Addressing homelessness

Reducing services that support our **local businesses**



WHERE THE PROPERTY TAX DOLLAR GOES



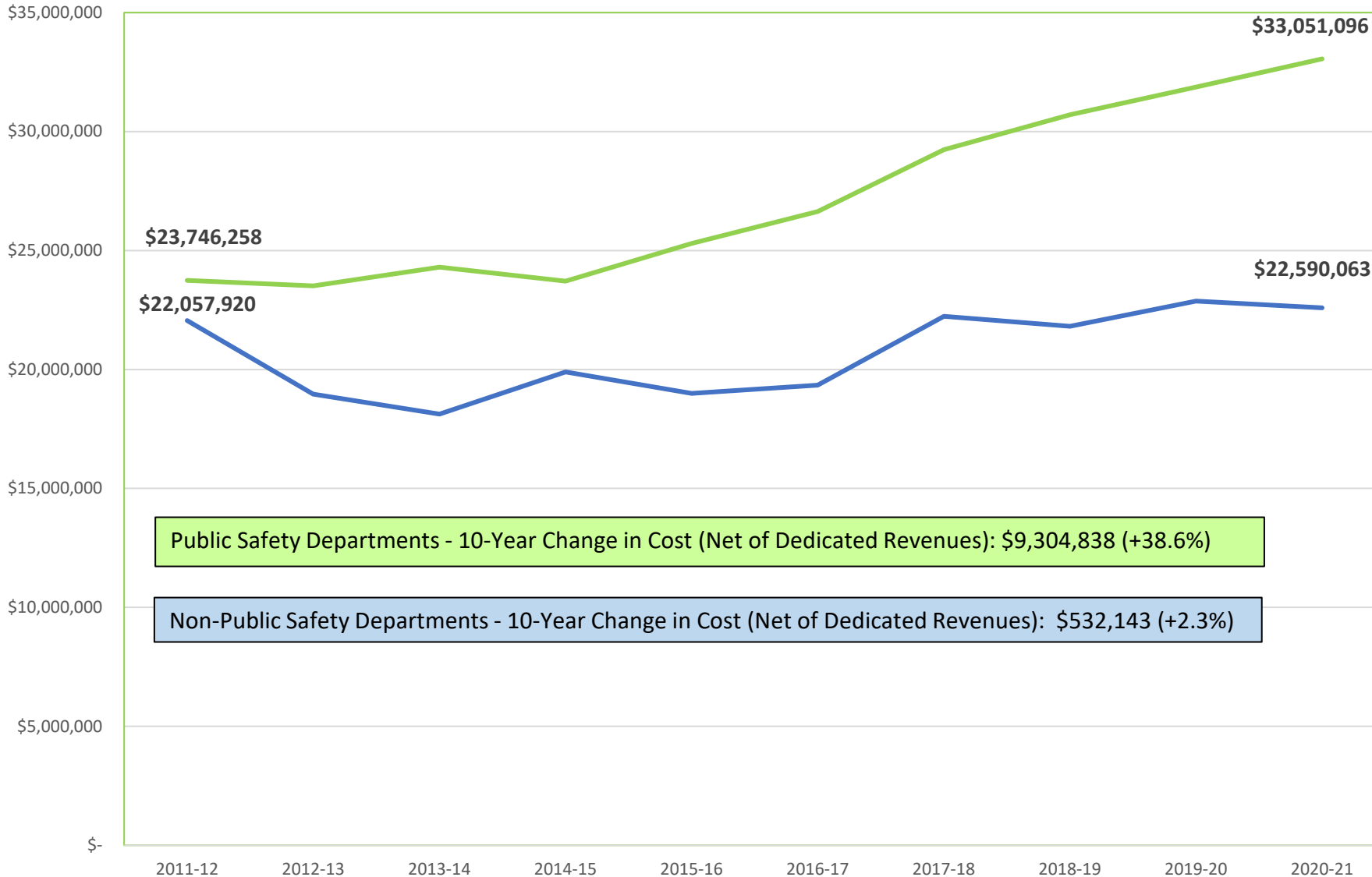
*The dollar does not take into account the sales tax compensation and State property tax swaps, such as triple flip and VLF.

** Any remaining balance after payment of enforceable obligations in the Redevelopment Property Tax Trust Fund is distributed back to the taxing entities.



Comparison of General Fund Costs

Actual department operating expenditures minus dedicated revenues - 2011-12 to 2020-21



Increase in allocations over 10 years

Public safety 38.6%

All other General Fund departments: 2.3%

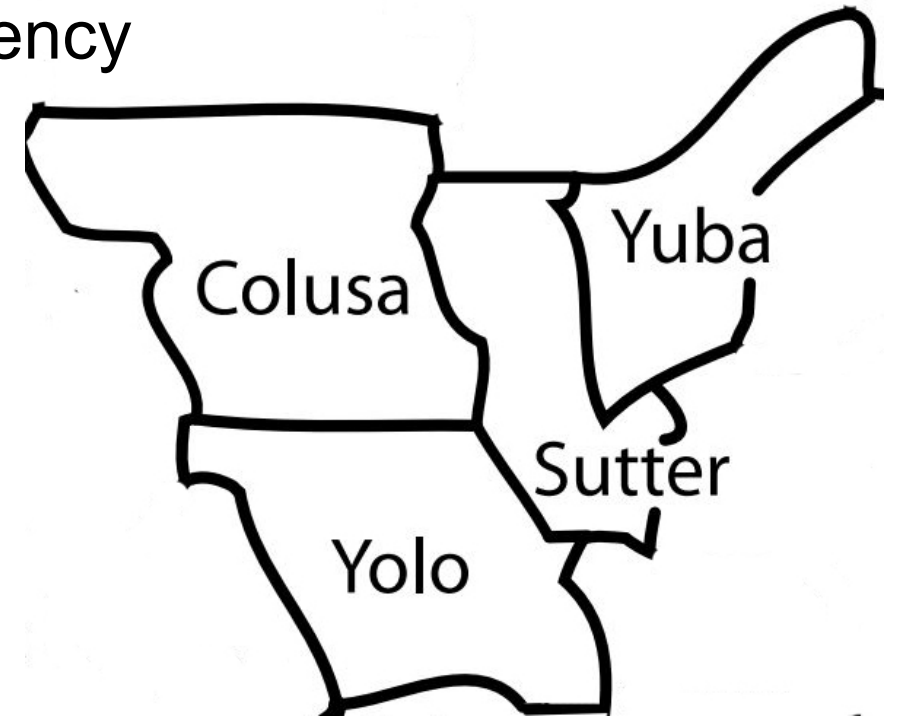


Is Sutter County Efficient?

What has Sutter County done to increase efficiency and maximize the use of taxpayer dollars?

Multijurisdictional operations:

- Sutter Yuba Behavioral Health Services
- Bi-County Public Health Officer
- Tri-County Juvenile Hall
- Tri-County Child Support Services
- Tri-County Weights and Measures truck program
- Bi-County Farm advisor shared with Yuba County
- Sutter Animal Services Authority
- Homeless camping facility
- SBFCA with partner Butte County



**Longterm
practice of
consolidating
services**



Community Priorities

In **3 community surveys** conducted over the past 2 years, hundreds of Sutter County residents ranked their top priorities:

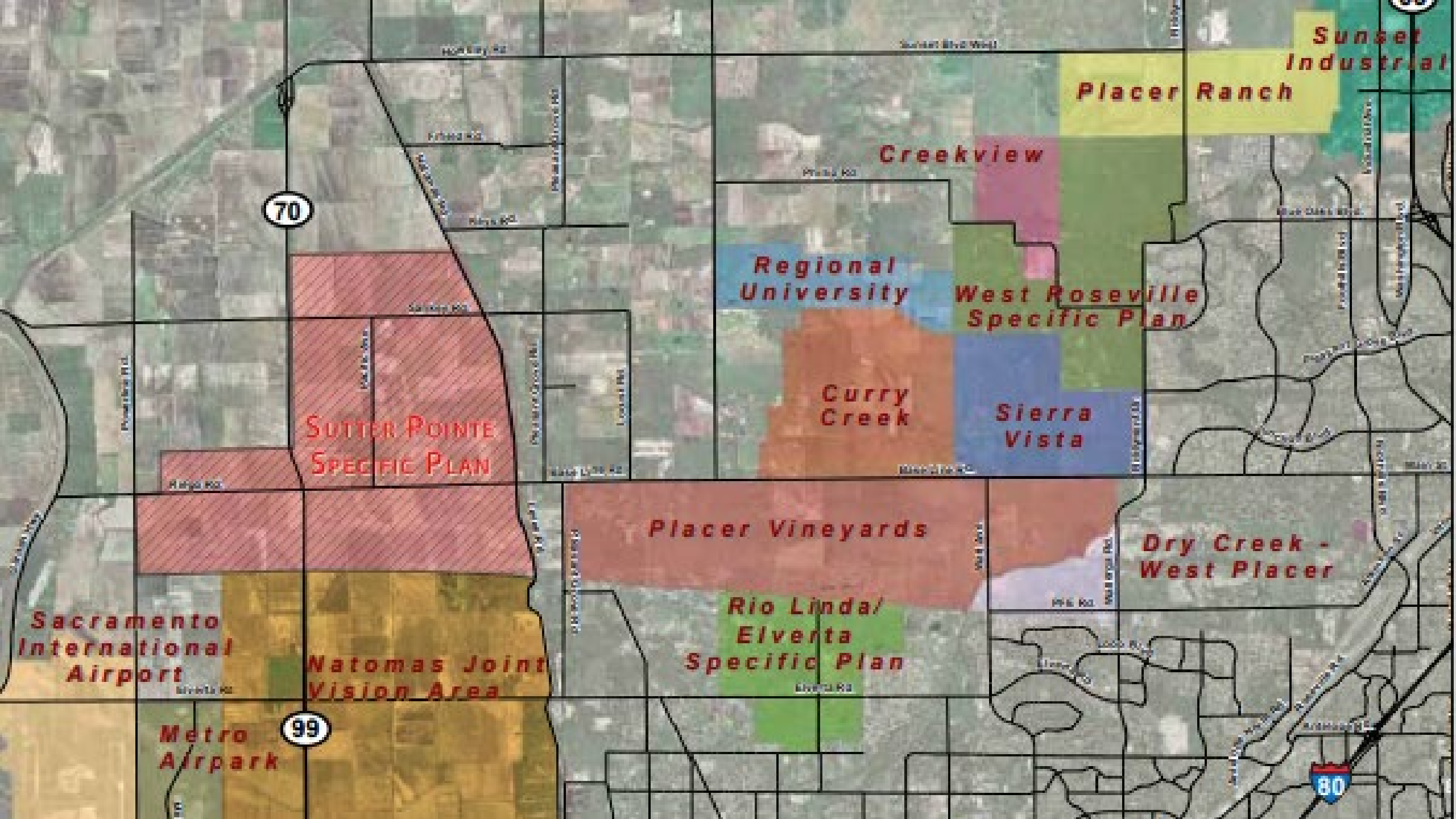
- **Addressing homelessness**
- **Maximizing local control of funding**
- **Maintaining fire and emergency medical, and Sheriff response times**
- **Upgrading firefighting equipment to meet safety standards**
- **Preventing the closure of a fire station**
- **Repairing roads**
- **Supporting businesses**



What is Measure A?

- On August 9, the Sutter County Board of Supervisors voted unanimously to place Measure A, **Sutter County's Essential Services Measure** on the November 8, 2022 Ballot.
- Measure A is a **proposed local Sutter County 1-cent sales tax Measure** that, if enacted by voters, would raise about \$19 million a year for in-County services.
- This would be **locally controlled revenue** that could not be taken away by the state or federal government.





Sunset Industrial Placer Ranch

Creekview

Regional University

West Roseville Specific Plan

SUTTER POINTE SPECIFIC PLAN

Curry Creek

Sierra Vista

Placer Vineyards

Dry Creek - West Placer

Sacramento International Airport

Natomas Joint Vision Area

Rio Linda/ Elverta Specific Plan

Metro Airpark

70

99

80

Official Measure A Ballot Language

Sutter County Essential Services Measure A: Shall an ordinance generating locally controlled revenue for Sutter County's general purposes, such as maintaining fire and emergency response times, sheriff's patrols, wildfire response, veterans services; providing firefighting equipment/training; repairing roads; addressing homelessness; preventing County fire station closure; ensuring fiscal stability, by levying a one cent sales tax for nine years, raising approximately \$19,600,000 annually that cannot be taken by Sacramento, requiring audits, citizens' oversight, public review/disclosure of spending, be adopted?



What happens without additional revenue?

During public discussions that have occurred over the course of the past three years in Sutter County, the following challenges have been identified:

- The average fire response time is currently about five minutes. It may go up to as long as 20 minutes because the County will have to close a fire station.
- The County may be forced to make cuts to essential public services such as reducing the number of sheriff's deputies patrolling our neighborhoods, and not replacing aging firefighting equipment. Fewer deputies and firefighters, and outdated equipment, will result in even longer 911 emergency response times.



Measure A's strict fiscal accountability provisions

- Independent citizens' oversight
- Public disclosure of all spending
- Annual independent financial audits

By law, Measure A funds are exclusively for use by Sutter County and cannot be taken away by the state of California.



Essential items exempt from sales tax

- **Most groceries**
- **Candy, confectionary, snack foods, bottled water**
- **Utilities**
- **Animal feed and drugs and medicine for food animals**
- **Seeds, plants and fertilizer**
- **Professional health care services**
- **Most medical supplies**
- **Most fund-raising sales by youth organizations, non-profit organizations**

For more information

www.suttercounty.org

MeasureAquestions@co.sutter.ca.us





QUESTIONS?