

COVID-19 Symptom & Quarantine Decision Forest for K-12 Schools

TREE #1: STUDENT OR STAFF WITH SYMPTOMS

Student or staff has any of the following **NEW** symptoms:

- Fever or chills
- Cough
- Shortness of breath or difficulty breathing
- Fatigue
- Muscle or body aches
- Headache
- New loss of taste or smell
- Sore throat
- Congestion or runny nose
- Nausea or vomiting
- Diarrhea

Exclude from school.

EITHER

If no testing is done, the student needs to be isolated for 10 days (presumptive positive).

Test* for COVID-19.

Receive an **alternative named diagnosis** from a health care provider.

POSITIVE

NEGATIVE

ISOLATION:
Individual must **isolate** at home. May return to school on Day 11 after symptom onset if at least 24 hours have passed since fever and symptoms have improved significantly. Isolation period may **NOT** be shortened due to subsequent negative test results.

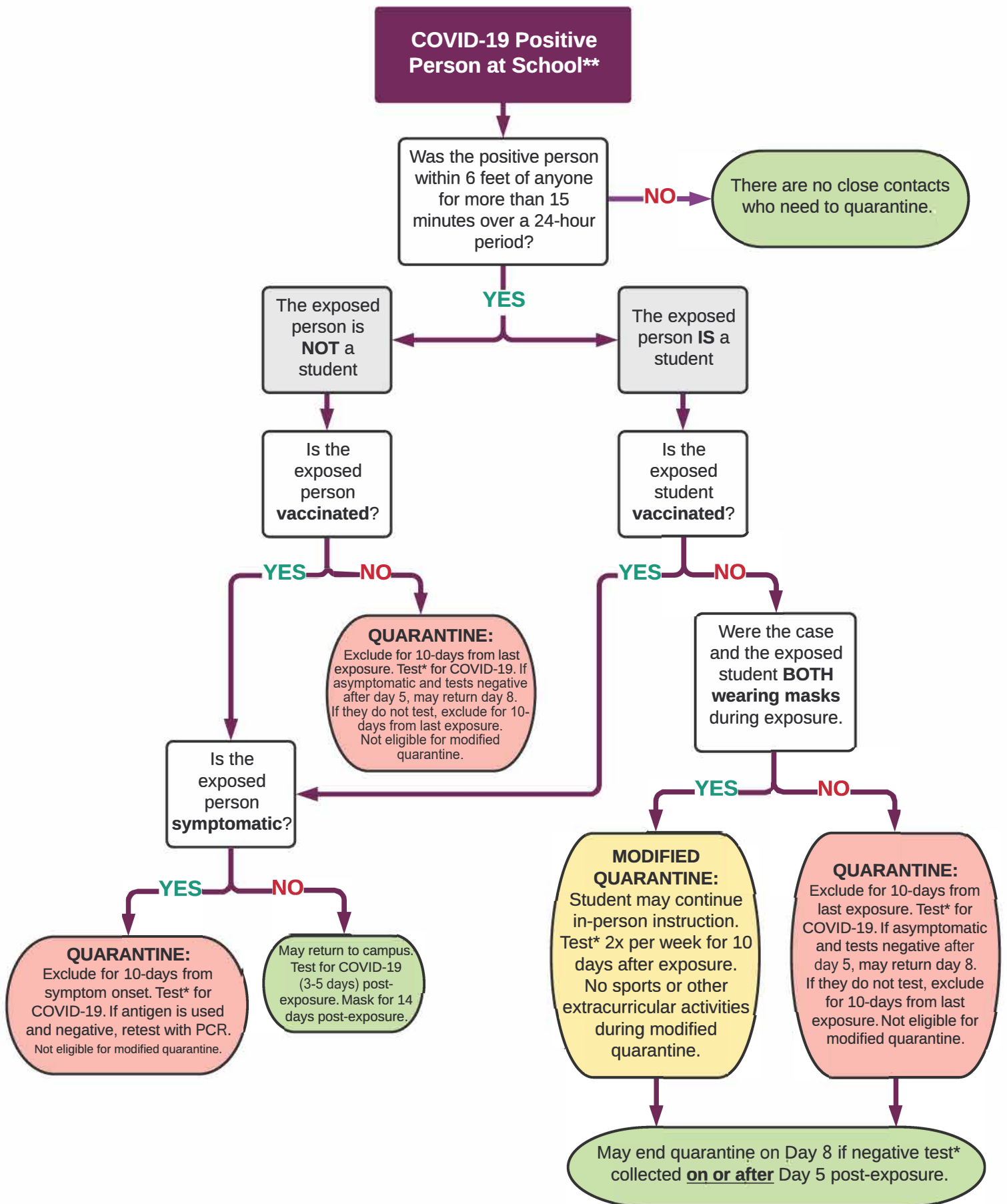
May return to school if at least 24 hours have passed since fever and symptoms have improved significantly.

CONTACT TRACING:
Identify all close contacts (>15 minutes within 6 feet of COVID-19 positive individual in 24 hour period) in the school setting, follow quarantine guidance on page 2, and report to Public Health.

CONTINUE TO TREE #2

* PCR or rapid antigen testing are acceptable testing methods. If antigen is negative, continue isolation and repeat with PCR testing.
** School setting in which students are supervised by school staff, including indoor or outdoor school settings and school buses.

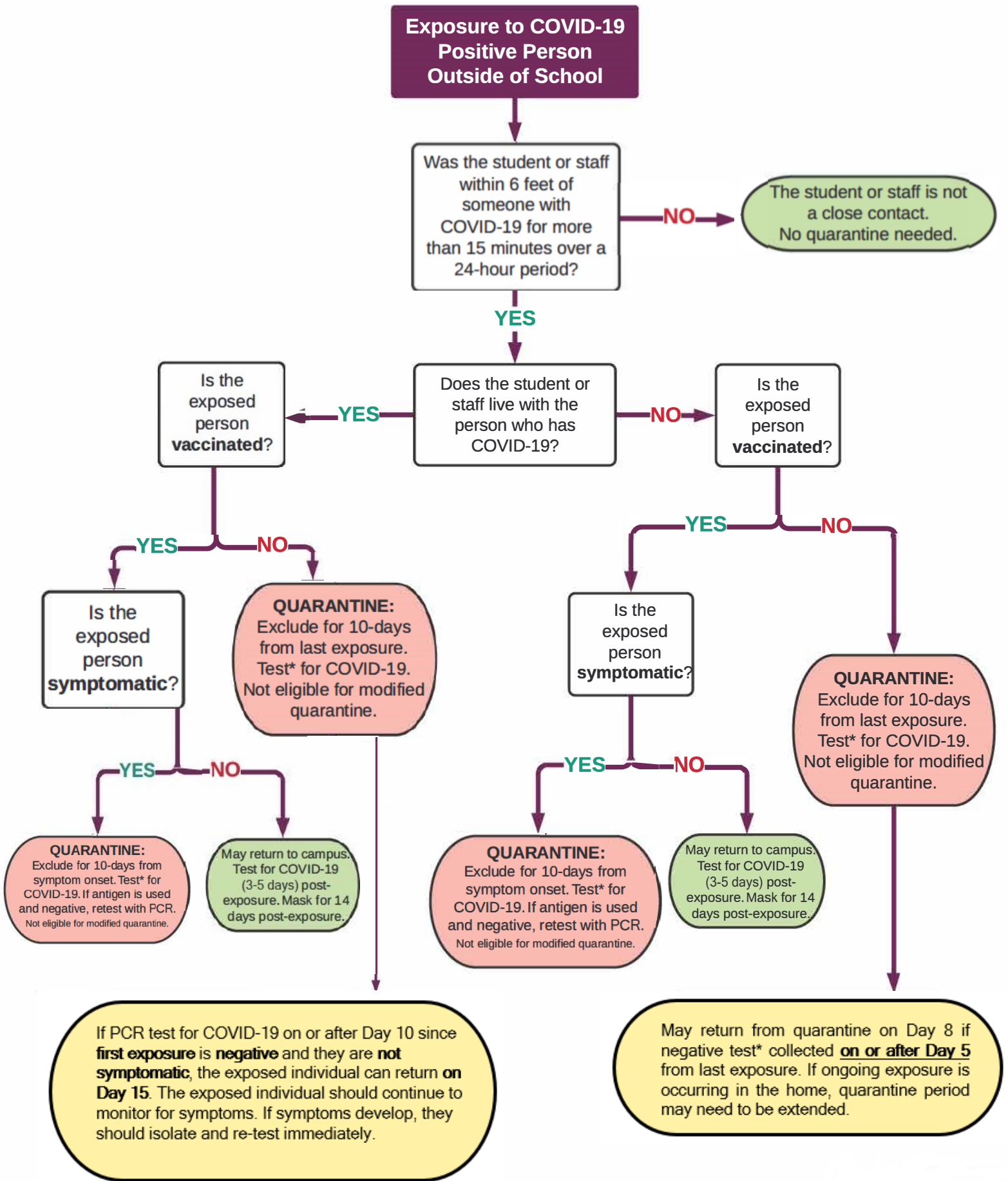
TREE #2: COVID-19 POSITIVE PERSON AT SCHOOL**



* PCR or rapid antigen testing are acceptable testing methods. If antigen is negative, continue isolation and repeat with PCR testing.

** School setting in which students are supervised by school staff, including indoor or outdoor school settings and school buses.

TREE #3: COVID-19 POSITIVE EXPOSURE OUTSIDE OF SCHOOL



* PCR or rapid antigen testing are acceptable testing methods. If antigen is negative, continue isolation and repeat with PCR testing.
 ** School setting in which students are supervised by school staff, including indoor or outdoor school settings and school buses.