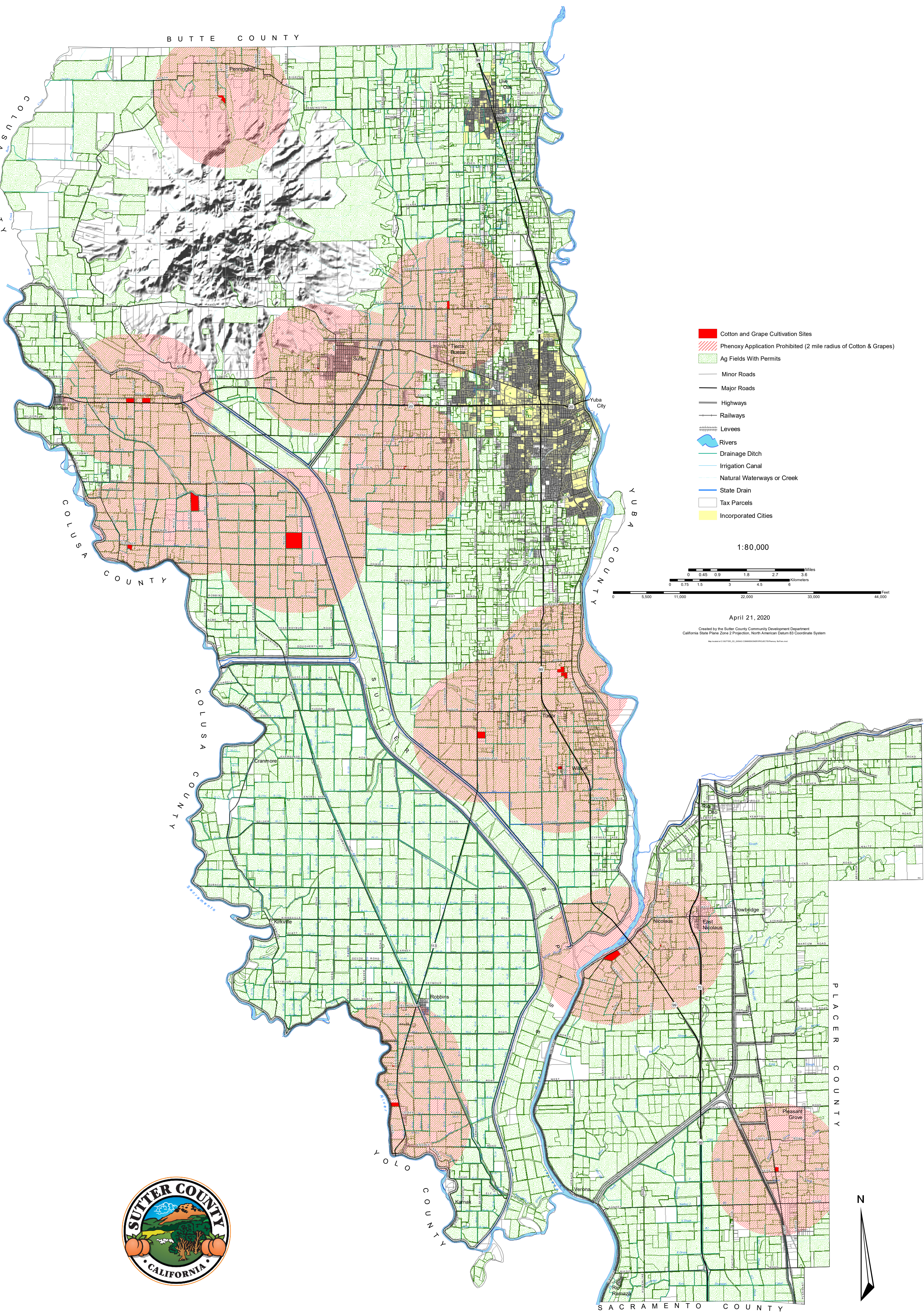
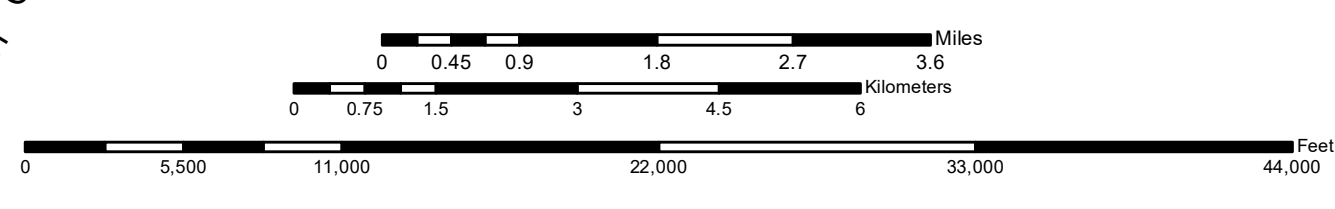


# PHENOXY APPLICATION PROHIBITED TWO MILE RADIUS OF COTTON AND GRAPE FIELDS



- Cotton and Grape Cultivation Sites
- ▨ Phenoxy Application Prohibited (2 mile radius of Cotton & Grapes)
- ▨ Ag Fields With Permits
- Minor Roads
- Major Roads
- Highways
- Railways
- Levees
- ~ Rivers
- Drainage Ditch
- Irrigation Canal
- Natural Waterways or Creek
- State Drain
- Tax Parcels
- Incorporated Cities

1:80,000



April 21, 2020

Created by the Sutter County Community Development Department  
California State Plane Zone 2 Projection, North American Datum 83 Coordinate System

